

the
CLASSIC
boutique

always in fashion

march 2024

new styles
added

for our
front cover
story
see page
38



visit www.theclassicboutique.com or call 0330 024 1945

no time limit guarantee • free returns • sizes 8-24

£5
off

new

alison
blouse

see
page
60



new colour

camelia

chloe zip
cardigan
see page
25



new

printed
polo
dress

see
page
29



'Whatever I have purchased with The Classic Boutique, I always know that it will be of good quality and as described.' **B. Sargent**

'Good fit and colours. Well-made.' **L. Oswin**

'I am always very pleased with everything I have bought from The Classic Boutique.' **C. Alty**

When we receive comments like these, we feel we must be doing something right! As a valued customer, we hope that you agree. For every edition of The Classic Boutique, we set out to offer you brand new styles and an exciting range of easy-to-wear, timeless classics.

Brilliant Value Wardrobe Basics

Who isn't interested in effortless warm weather style? We are delighted to introduce our new capsule collection featured from pages 28-30. We have taken time to get the detail right. All keenly priced, we are sure they will quickly become the hardest working pieces in your wardrobe. By mix and matching you can create a raft of fresh and versatile looks.

Make the Most of Our Early Bird Offers

In each edition and for a limited time only, we offer you great early bird savings. This isn't a stock clearance but our way of saying thank you for supporting our employee-owned business. Save on customer favourites and even on new season styles from now until 4th April. Shop with money off one of our best-selling skirts, in a choice of 6 colours. Turn to page 110 to discover Polly skirts and more. There are even more savings on three of our trouser ranges and turn to page 60 to save £5 on our checks and stripe shirts. Come the 5th April, these styles will revert to their normal catalogue prices. Take time to shop these savings whilst you can.

Within this allocated space we can't possibly do the range justice, so my recommendation to you is to sit down with a cuppa and enjoy flicking through the pages. Call or shop our new range online ready for the warmer days ahead.

Rebecca

Rebecca Parker
(Customer Services Manager)

Did you know all returns are free and your purchases are covered by our **no time limit guarantee**? We also have a dedicated team of seamstresses who can alter the length of trousers, skirts, or nightwear, to deliver a perfect fit. See page 75 for details.

phone UK **0330 024 1945**

online **www.theclassicboutique.com**

post **freepost address on order form**



christine blouse

Pure, softly draping lyocell striped blouse in shades of sage, blossom and pale blue on a white base. Long sleeved style with roll up sleeve feature. Straight hem and side vents. Back length approx. 28". Machine washable.

Sizes 8-24

GP3 ST

£59

christine
blouse

best
selling
style





new
monica
blouse

new
monica
skirt



white
jodie top
see page
26

new
michelle
skirt

monica

Stand out from the crowd wearing this exquisite pure cotton lawn in shades to suit any wardrobe and perfect for any occasion. Choose a tonal piece of essential knitwear to carry you through from day to evening. Machine washable.

Sizes 8-24

monica blouse

Short sleeved style with a straight hem and side vents. Perfect with the matching skirt or worn alone as a statement blouse. Back length approx. 28".

JG2 FL

£55

monica skirt

Fully lined and cut on the bias for a flattering fit. Featuring a side zip and button fastening and side back waist elastication for comfort. Elegant and stylish this skirt is perfect with the matching blouse or worn with any tonal separates.

JG3 FL length 27"

JG4 FL length 30"

JG5 FL length 33"

£85



new
monica
blouse

michelle

Supersoft and easycare 64% polyester/33% viscose/3% elastane. Sophisticated styles that can be dressed up or down in a gorgeous, bright shade of watermelon to stand out from the crowd. Machine washable.

Sizes 10-24

michelle skirt

We are delighted to bring to you this brand new style of pull on skirt featuring a mock button through design. This feminine cut has a soft flattering drape with full back elastication for ease of dressing and side seam pockets.

JM6 WM length 27"

JM7 WM length 30"

JM8 WM length 33"

£79

michelle dress

This dress speaks for itself and is effortlessly stylish. Button through style featuring pie frill detail to the collar and sleeve hems with a self fabric tie belt.

JM9 WM length 47"

£89



ayla
necklace
see page
93

new
michelle
dress



merino cardigan

The supersoft fine 21 gauge knit makes this cardigan perfect for layering. 'V' neck style with fully fashioned sleeves, front patch pockets and colour co-ordinated buttons. Back length approx. 25". Machine washable.

Sizes 8-24

601

£85



sapphire



new
talía
skirt

white
silky square
neck top
see page
27

talía

You will love this contemporary animal print in shades of green on a navy base. Cut from pure, soft Austrian cotton jersey. Machine washable.

Sizes 8-24

talía skirt

An easy pull on style, lined for comfort with a gently elasticated back and two handy pockets.

HY3 GR length 27"

HY4 GR length 30"

HY5 GR length 33"

£89

talía blouse

Softly styled, lovely to wear, short sleeve blouse with straight hem and side vents. Back length approx. 27".

HY2 GR

£75



new
talía
blouse

denim
jeans
see page
44

- spearmint
- sage
- coral
- bouquet
- viola
- white
- pale blue
- cream
- sapphire
- cornflower
- turquoise
- red
- champagne
- navy

white



plain silky cotton blouson top
Comfortable pull on style with three quarter sleeves. Cut from soft, pure Austrian cotton jersey with ruched shoulders and a broad welt. Back length approx. 25¼". Machine washable. Fourteen colours as shown.
Sizes 8-24
1£9 £49



melody blouson

melody skirt

melody
Crafted from soft pure silky Austrian cotton jersey in a pretty pastel floral print on a cream base. Machine washable.

melody blouson
A gently relaxed fit with elbow length sleeves, ruched shoulders and a broad welt. Back length approx. 24½".
Sizes 8-24
HX3 FL £59

melody skirt
Easy wear, pull on style, fully lined with side seam pockets and back waist elastication.
Sizes 8-24
HX4 FL length 27"
HX5 FL length 30"
HX6 FL length 33" £89



melody blouson

pear sandown skirt
see page 66



zara
blouson

tawny
sandown
pull-on
trousers
see page
76



navy
merino long
sleeve
crew neck
see page
40

zara
skirt

zara

You loved this contemporary animal print in camel on a navy base. Cut from pure, soft Austrian cotton jersey. Machine washable.
Sizes 8-24

zara blouson

Featuring long sleeves and an elegant neckline, ruched shoulders and a broad welt. Back length approx. 24".

HC6 NV £59

zara skirt

Look your best while feeling comfortable in this fully lined pull on skirt with side seam pockets and back waist elasticsation.

HC7 NV length 27" £89
HC8 NV length 30"
HC9 NV length 33"

**merino short
sleeve crew**

Perfect for layering this season is our delicate short sleeved crew neck in premium fine 21 gauge merino wool. With a finely ribbed neck and welt, it is easy to wear on its own or under our co-ordinates. Back length approx. 24 1/4". Machine washable.

Sizes 8-24
3HI £65



premium
fine merino
wool

esme scarf
Approx.
159 x 56cm.
HW9 FL
£19

cream



watercress	rose	watermelon	aqua	lemon
mimosa	tawny	mulberry	opal	pale blue
sage	dusky pink	bluebell	coral	cream



new
daphne
dress

daphne dress

Button through shirt dress with a short sleeve. Cut from easycare 65% cotton/35% rayon in bright, tropical shades of turquoise, mango, lilac and lemon. Self fabric drawstring waist and side seam pockets. Lightweight and ideal for any occasion. Machine washable.

Sizes 10-24

JA5 ML length 47"

£79



new
helen
dress

helen dress

Utterly soft, lightweight dress. New style featuring tie neckline and side seam pockets. Its self-fabric tie belt allows you to instantly transform your look. Machine washable.

Sizes 10-24

JJ7 BL length 45"

JJ8 BL length 47"

£75



watermelon

merino short cardigan

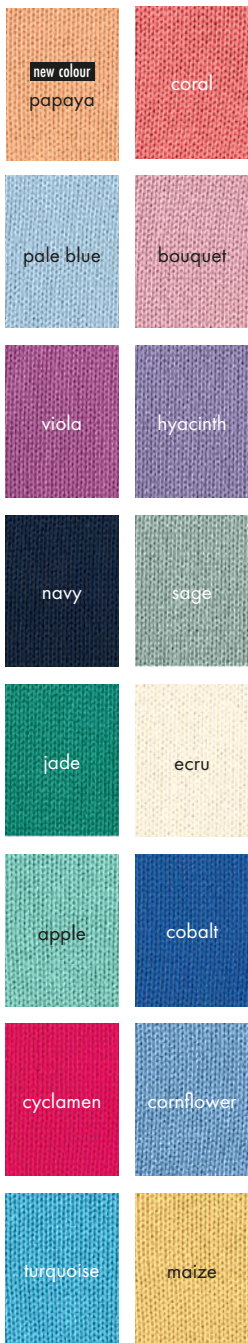
A great basic with flattering fit. Short style merino cardigan with a delicate crew neck, fully fashioned sleeves and pretty shell buttons. A great wardrobe staple! Back length approx. 21 1/2". Machine washable.

XS (36") S (38") M (40") L (42") XL (44")

6HF

£75

watercress	tawny
plum	olive
opal	jade
apple	sapphire
sage	watermelon
lemon	dusky pink
camel	red spice
navy	aqua
cyclamen	grey
mulberry	black
bluebell	turquoise



luxury knit polos

Short sleeved polo style knitted in luxuriously soft long staple cotton. Buttoned front placket and ribbed hem and cuff welts. Machine washable. Seventeen colours as shown.

XS (32-34") S (34-36") M (38-40") L (42-44") XL (46-48")

865

£45



lola

Bursting with vibrant colours, cut in flattering styles our soft pure Austrian silky cotton jersey is set to be a seasonal favourite. Machine washable. **Sizes 8-24**

lola skirt

Look your best while feeling comfortable in this fully lined pull on skirt with side seam pockets and back waist elastication.

HW6 ML length 27"

HW7 ML length 30"

HW8 ML length 33"

£89

lola blouson

Featuring three quarter sleeves and an elegant neckline, ruched shoulders and a broad welt. Back length approx. 24½".

HW5 ML

£59





rosa cotton
cardigan



rosa
cotton top



vicky
top

vicky top

Add a touch of class to your wardrobe with this effortlessly stylish pure cotton top. Sweetheart shape neckline with pretty embroidery detail. Three quarter length sleeves and a gently curved hem. Back length approx. 24½". Machine washable. Navy.

XS (37") S (41") M (45") L (49") XL (53")

JA9 NV

£49

rosa cotton cardigan

Pure cotton knit, geometric Jacquard button through cardigan, designed for casual comfort. Sophisticated and timeless crew neck style with ribbed welt and sleeve cuffs. Back length approx. 26½". Machine washable. Navy.

Sizes 8-24

JB6 NV

£69

rosa cotton top

Attractive geometric Jacquard design knitted in luxuriously soft, pure cotton. Delicate crew neck with ribbed welt and sleeve cuffs for comfortable wear. Back length approx. 24". Machine washable. White.

Sizes 8-24

JB5 WT

£59



della
sweater

denim
jeans
see page
44

della sweater

An elegant and versatile addition for your collection. Knitted from luxuriously soft 50% merino wool/50% acrylic. Long sleeve style and a delicate crew neck with a relaxed fit. Pretty button detail to shoulder and arm and contrast ribbing throughout. Machine washable. Navy.

Sizes 8-24

HS9 NV

£75



cream
rebecca

new
tamara
trousers
see page
33

rebecca sweater

Delicate crew neck style with long sleeves and side vents. Knitted in soft, pure cotton with a ribbed hem and cuff. Back length approx. 27". Machine washable. Cream.

Sizes 8-24

EU3

£59



pearl
sandown
jacket

denim
jeans
see page
44



**£50
off**
marie v
neck

classic, stylish clothing

marie v neck
Supersoft merino blend rib knit sweater with flattering "V" neckline, set in sleeves and side vents for comfort. 50% merino wool/50% acrylic. Back length approx. 26". Machine washable. Powder blue.
Sizes 8-24
GD9 BL **£95 £45**

sandown jacket
Feel sophisticated in this classic fully lined, round neck style jacket with four button front fastening. Shaped front and back panels with jetted pockets. Lightweight and easycare 54% polyester/44% wool/2% lycra with excellent drape. Back length approx. 24½". Pearl.
Sizes 10-24
GT2 PL **£175**



celine cardigan
Our lovely edge to edge cardigan is all you need to complete your look. Knitted in ultra-soft, merino blend wool with a ribbed shawl collar and patch pockets. With no fastenings, it is delightfully easy to pop on. 50% merino wool/50% acrylic. Machine washable.
XS (33") S (38") M (42")
L (46") XL (50")
8T2 £79

powder
pink

- pear
- putty
- red
- powder pink
- warm white
- powder blue
- raspberry
- indigo
- black

sherrie

short sleeve

polo

£5

off

white

easycare

pull on

trousers

easycare pull on trousers

Pull on style trousers with full back waist elastication, soft front pleats with side pockets and a slightly tapered leg.

5P2 inside leg 28"

5P3 inside leg 30" £69 £64

if purchased before 04.04.24



white

seafoam

coral

navy

easycare separates
 Stylish, practical and versatile pull on separates. Easycare 57% cotton/40% polyester/3% elastane adding a slight stretch to the fabric. Ideal for leisure or travel. Machine washable. Navy, White, Coral, Seafoam.
 Sizes 10-24

easycare pull on skirt

Six gore panel style with fully elasticated waistband for a flattering fit.

5N7 length 27"

5N8 length 30"

5N9 length 33" £69

easycare cropped trousers

Comfortable pull on style with full back waist elastication, soft front pleats with side pockets and a cropped leg. Hem width approx. 8½".

5P4 £65

gina

polo

white

easycare

crops

printed short sleeve polos
 Short sleeved style cut from soft, pure Austrian cotton jersey, with a fantastic feel. Comfortable to wear with a narrow placket, straight hem and side vents. A great addition to your summer wardrobe. Back length approx. 25". Machine washable.
 XS (34-36") S (38-40") M (42-44") L (44-46") XL (48-50")

JF5	BL	sherrie	EH2	MX	gina
JD3	FL	jemima	JE8	ML	flora
					£49

new

jemima

polo

flora

polo



celery	bouquet
viola	cream
cornflower	sage
red	sapphire
turquoise	white
coral	lagoon
pale blue	papaya
navy	spearmint

silky cotton polo

Cut from soft, luxurious pure Austrian cotton jersey with a silky finish. Generously sized. Short sleeved style with narrow placket, straight hem and side vents. Machine washable. Available in seventeen colours.
XS (34-36") S (38-40") M (42-44")
L (44-46") XL (48-50")

2DP £45

silky cotton snood scarf

Silky cotton circular loop scarf cut from soft, luxurious Austrian cotton jersey. Machine washable. Colours as shown.

Approx. length 50cm
CM9 £20



printed short sleeve polos

Short sleeved style cut from soft, pure Austrian cotton jersey, with a fantastic feel. Comfortable to wear with a narrow placket, straight hem and side vents. A great addition to your summer wardrobe. Back length approx. 25". Machine washable.

XS (34-36") S (38-40") M (42-44") L (44-46") XL (48-50")

JD6 ML enya
GM7 BL becky (no XL)
GN2 FL harper

£49





ice
blue



berry



ashleigh
polo

alexa
polo



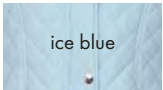
etta
polo



merida
polo



olive



ice blue



gold



black



berry
(gilet only)



dusky rose

quilted jacket

Classic showerproof jacket with diamond quilting. Fully lined. Front stud fastening, two zip pockets on outside and button-close pocket on inside. Machine washable. Length approx. 26".

Colours as shown.

Sizes 10-24

8Y7

£99

quilted gilet

Smart and versatile with diamond pattern stitch detail. Zip-close front with popper placket. Two zip pockets on outside and button-close pocket on inside. Fully lined. Showerproof. Machine washable. Length approx. 26". Colours as shown.

Sizes 10-24

6C8

£79

stylish comfortable clothing

silky cotton long sleeved polo

Super stylish and easy to wear. Long sleeved polos cut from luxurious Austrian silky cotton jersey with a soft stretch. Elegant collar, three button placket, straight hem and side vents. Machine washable.

XS (34-36") S (38-40") M (42-44") L (44-46") XL (48-50")

GW9 GR ashleigh polo

£59

JF8 ML etta polo

£59

JE2 PK alexa polo

£59

JD4 FL merida polo

£59



new colour

camelia

chloe
zip
cardigan

denim
jeans
see page
44



navy
chloe
zip
cardigan

chunky knit cardigan in pure cotton

chloe zip cardigan

Wrap up in this chunky cotton cardigan. Delicate crew neck style with front zip fastening, knitted in pure cotton. Chunky rib welt, cuff and neck band, also featuring two front patch pockets. Back length approx. 26". Machine washable. Camelia, Navy.

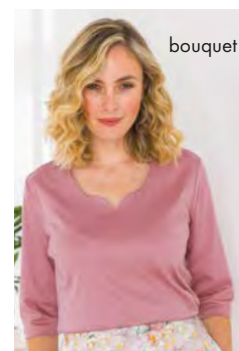
XS (34") S (38") M (42") L (46") XL (50")

FY8

£69



pale blue
jodie top



bouquet



white

jodie top

Super flattering sweetheart neckline top, cut from soft, luxurious pure Austrian cotton jersey with a silky finish. Generously sized.

Machine washable.

Bouquet, White, Pale Blue.

XS (37") S (41") M (45") L (49") XL (53")

GG4

£45



white
jodie top

new
stacey
skirt

stacey skirt

This feminine fully lined skirt with a pastel floral print on an ecru base is ideal for many occasions. Cut from pure, natural viscose giving excellent drape and featuring a two button waist fastening and side seam pockets. Soft unpressed pleats front and back complete the look. Machine washable.

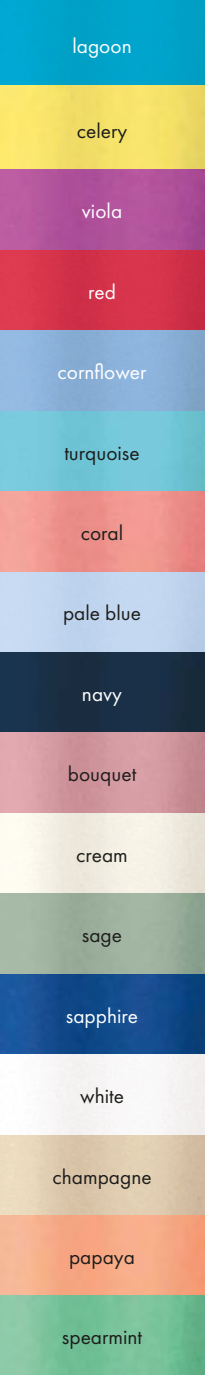
Sizes 10-24

JC2 FL length 27"

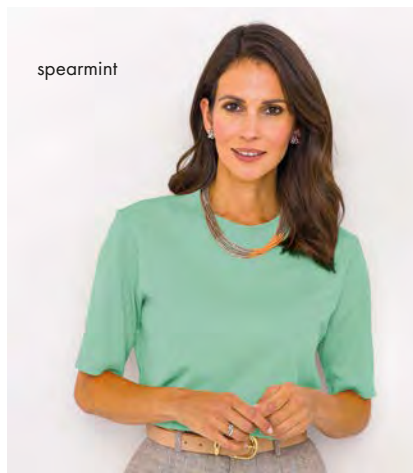
JC3 FL length 30"

JC4 FL length 33"

£79



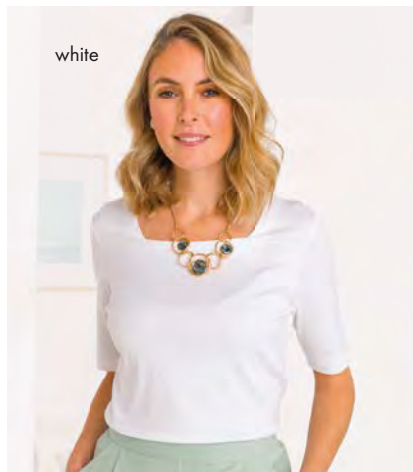
cornflower



spearmint



bouquet



white

silky cotton tops

Cut from soft, luxurious pure Austrian cotton jersey with a silky finish. Generously sized. Machine washable. Seventeen colours as shown.

XS (30-32") S (34-36") M (36-38") L (40-42") XL (42-44") XXL (46-48")

(Save £5 buy two for £79)

'v' neck top

Classic 'V' neck top with short sleeves and gently rounded hem.

061 £42

sleeveless top

Sleeveless style with binding around neck and sleeve hems. Gently rounded hem with side vents.

XS, S, M, L, XL
064 £42

crew neck top

Short sleeved style with delicate crew neck and gently rounded hem.

054 £42

square neck top

Flattering square neck line with short sleeves and gently rounded hem with vents.

3PS £42



new style
mock
layer
top

white
easycare
pull on
trousers see
page
19

mock layer top

Simple yet stylish our mock cardigan layered top is ideal for cosy days in or leisurely days out. Machine washable. Back length approx. 24".

XS (34.5") S (39") M (47") L (50") XL (54")

JL7 NV £42



white
square
neck top

new
print
skirt

print skirt

Smart yet simple this fully elasticated skirt is a joy to wear. Styles perfectly with our mock layer top. Machine washable.

Sizes 8-24

JM4 NV length 27"

JM5 NV length 30" **£39**



new
printed
polo
dress

printed polo dress
A relaxed style pull on dress in a delightful floral print.
Machine washable.
XS (40") S (44") M (48") L (52") XL (56")
JL4 NV length 41" **£49**



emily top

new
hannah
skirt

emily top
A simple and feminine, pure cotton top. Pretty keyhole detail and binding to neckline. Gently rounded hem and three quarter length sleeves. Back length approx. 26". Machine washable. White.
XS (38") S (42") M (46")
L (50") XL (54")
HY7 WT **£45**

hannah skirt
Cut from pure Austrian silky cotton with a fully elasticated waistband for a comfortable fit. Easywear, pull on style with side seam vents for ease of walking. Machine washable. Navy.
Sizes 10-24
GE6 NB length 27"
GE7 NB length 30"
GE8 NB length 33" **£75**

timeless
style
placement
prints

placement print t shirt
Ideal for any occasion a nautical striped top with floral detailing. Machine washable. Back length approx. 26".
XS (38") S (42") M (46")
L (50") XL (54")
JL6 WT **£35**

stripe crew t shirt
A simple striped top with a gently rounded hem, perfect for everyday wear. Machine washable. Back length approx. 26".
XS (38") S (42") M (46")
L (50") XL (54")
JL2 BL **£32**

print crew neck t shirt
A floral design crew neck t-shirt, ideal for everyday wear. Machine washable. Back length approx. 26".
XS (38") S (42") M (46")
L (50") XL (54")
JL3 FL **£32**

seam front trousers
Stay comfortable all day long in these fully elasticated waist trousers with a stitched front seam. Machine washable.
S (26") M (30")
L (34") XL (38")
JM2 DE
inside leg 28"
JM3 DE
inside leg 30" **£39**



new
placement
print t shirt



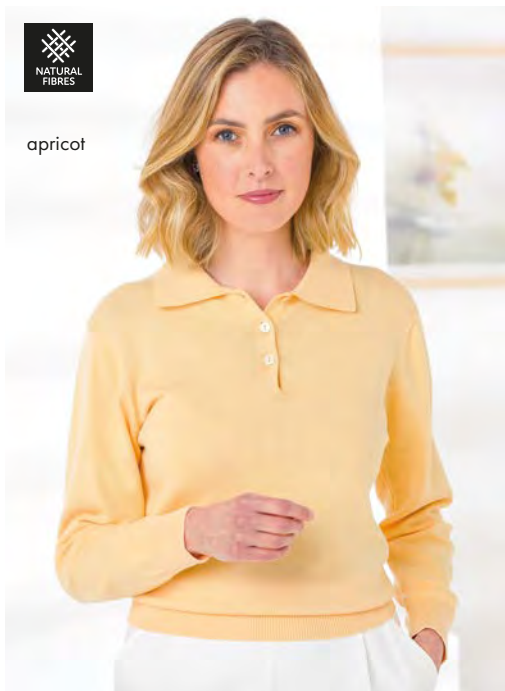
new
stripe crew
t shirt



new
seam front
trousers



apricot



kathy
top
iris
cream



pure cotton long sleeved tops

Knitted in pure, soft, comfortable cotton.

cornflower



cotton collar polo

Long-sleeved style polo knitted in pure soft cotton. Elegant collar and tonal buttons. Back length approx. 22½". Machine washable. Aqua, Apricot, Cornflower.

XS (32-34") S (34-36") M (38-40")
L (42-44") XL (46-48")

CA4 £55

cotton crew neck

Crew neck style with fully fashioned sleeves knitted in pure cotton. Ribbed neck, hem and cuffs. Machine washable. Aqua, Apricot, Cornflower.

Sizes 8-24

9B9 £55

cotton v neck

'V' neck style knitted in pure cotton with a ribbed hem and cuffs. Machine washable. Aqua, Apricot, Cornflower.

Sizes 8-24

9D4 £55



aqua

emerald
cream red
cream iris
cream navy
cream pink
cream



kathy cotton top

Short sleeve Breton style top knitted from super soft pure cotton. Finely ribbed neck and welt. Back length approx. 24". Machine washable. Navy/cream, Emerald/cream, Iris/cream, Red/cream, Pink/cream.

Sizes 8-24

CH4 £55



emerald

red

navy

iris

pink

carla cardigan

Edge to edge style cardigan knitted from pure cotton. Featuring delicate ribbed trim around the neckline and front with two patch pockets. Back length approx. 26½". Machine washable.

Emerald, Red, Navy, Iris, Pink.

XS (32-34") S (36-38") M (40-42")
L (44-46") XL (48-50")

FW6 £59



emerald
carla
cardigan
and
kathy top





tamara

Super soft, pure cotton chambray. Lightweight and versatile in denim blue to coordinate with any wardrobe separates. Machine washable.

tamara trousers

Stylish, comfortable and smart, these new style pull on trousers will be a favourite this season. Full back waist elastication and featuring a drawstring self fabric tie belt for total comfort. Twin needle top stitching detail and side seam pockets complete this look.

Sizes 10-24

JJ2 NB inside leg 28"

JJ3 NB inside leg 30" **£69**

tamara skirt

We are sure you will love this new style. Versatile pull on skirt with full back waist elastication for comfort. Front patch pockets featuring twin needle top stitching detail for an eye-catching finish.

Sizes 10-24

JJ4 NB length 27"

JJ5 NB length 30"

JJ6 NB length 33" **£69**



seasonal sweaters for spring

aspen sweater

Sumptuously soft, pure cotton knitted sweater. Cable detail to front with ribbed sleeves and back for supreme comfort. The perfect spring to summer knit for your collection. Back length approx. 25". Machine washable. Cream.

Sizes 8-24

JB4 CR **£75**

mia sweater

A fabulous seasonal sweater for your wardrobe. Lightweight but cosy enough to keep the chill off. Knitted in super soft pure, cotton in pretty shades of apple, lilac, buttermilk, aqua and pink. Back length approx. 27". Machine washable. Multi-coloured.

Sizes 8-24

HV9 ML **£59**





forget-me-not scarf
see page
91

lianne
sweater



diamond
stitch detail

white
easycare
trousers
see page
19



dollie
luxury knit
sweater

dollie luxury knit sweater

Short sleeved luxury knit sweater knitted in super soft, long staple cotton. Stripe design in muted tones of apple, buttermilk, cornflower and carnation. Buttoned front placket and ribbed hem and cuff welts for supreme comfort. Machine washable.

XS (34") S (38") M (42") L (46") XL (50")

HX7 ST £55

lianne sweater

Ultra lightweight diamond stitch detail crew neck sweater. Knitted in super soft, fine, 70% viscose/30% polyester mix. Super comfortable ribbed hem and cuff. Back length approx. 24". Machine washable.

Sizes 10-24

JB7 TQ £59



new colour
lilac mist

cotton scalloped top

Elegant, comfortable short sleeved top knitted in pure cotton with delicate scalloped edge to neckline, sleeves and hem. Machine washable. Fourteen colours as shown.

XS (32-34") S (34-36")
M (38-40") L (42-44")
XL (46-48")

2DJ £45



new colour
lilac mist

jade

cobalt

turquoise

bouquet

ecru

sage

maize

viola

pale blue

dove

cyclamen

apple

navy



adele
blouson



new
bella
blouson



new
marianne
blouson



annabelle
blouson

navy
easycare
trousers
see page
19



marissa
blouson

silky cotton blouson tops

Casual pull on style with three quarter sleeves designed to cover the elbow. Cut from super luxurious, Austrian cotton jersey with flattering ruched shoulders and a broad welt, for effortless comfort. Back length approx. 24½". Machine washable.

bella blouson

Vibrant tulip print in shades of purple, sky, coral and green on a white base.

Sizes 8-24

JN3 FL £59

adele blouson

A pretty floral sprig design in shades of aqua, watermelon, spearmint and apple with a haze of pale pink.

Sizes 8-24

JC8 FL £59

marissa blouson

Attractive marble design blouson top in shades of silver, pale pink and violet on an off white base.

Sizes 8-24

HA8 ML £59

marianne blouson

Flattering square neck style blouson top. Super comfortable and easy to wear, pull on style. Cut from luxuriously soft, Austrian cotton jersey. Attractive paisley print in shades of pale pink, lime and navy.

XS (38") S (42") M (46") L (50") XL (54")

JF7 ML

£59

annabelle blouson

Delightful sweetheart neck style, cut from supreme, pure Austrian cotton jersey. A super comfortable and relaxed pull on style. Delicate floral print in pale blue and white.

XS (38") S (42") M (46") L (50") XL (54")

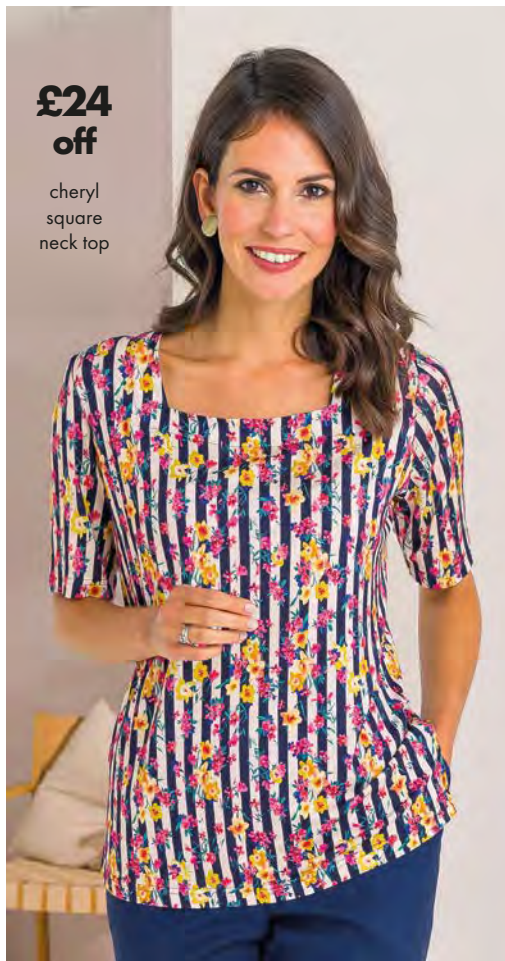
JD8 FL

£59



gracie blouse

denim jeans
see page 44



£24 off

cheryl square neck top

gracie blouse

Roll up long sleeve style, cut from lightweight pure cotton lawn in a delicate floral print which reminds you of a summer meadow. Back length approx. 28". Machine washable.

Sizes 8-24

HW4 FL

£59

cheryl square neck top

Flattering square neck line in two attractive floral designs. Short sleeves and gently rounded hem with vents. 96% viscose/4% elastane. Machine washable.

XS (30-32") S (34-36") M (36-38")

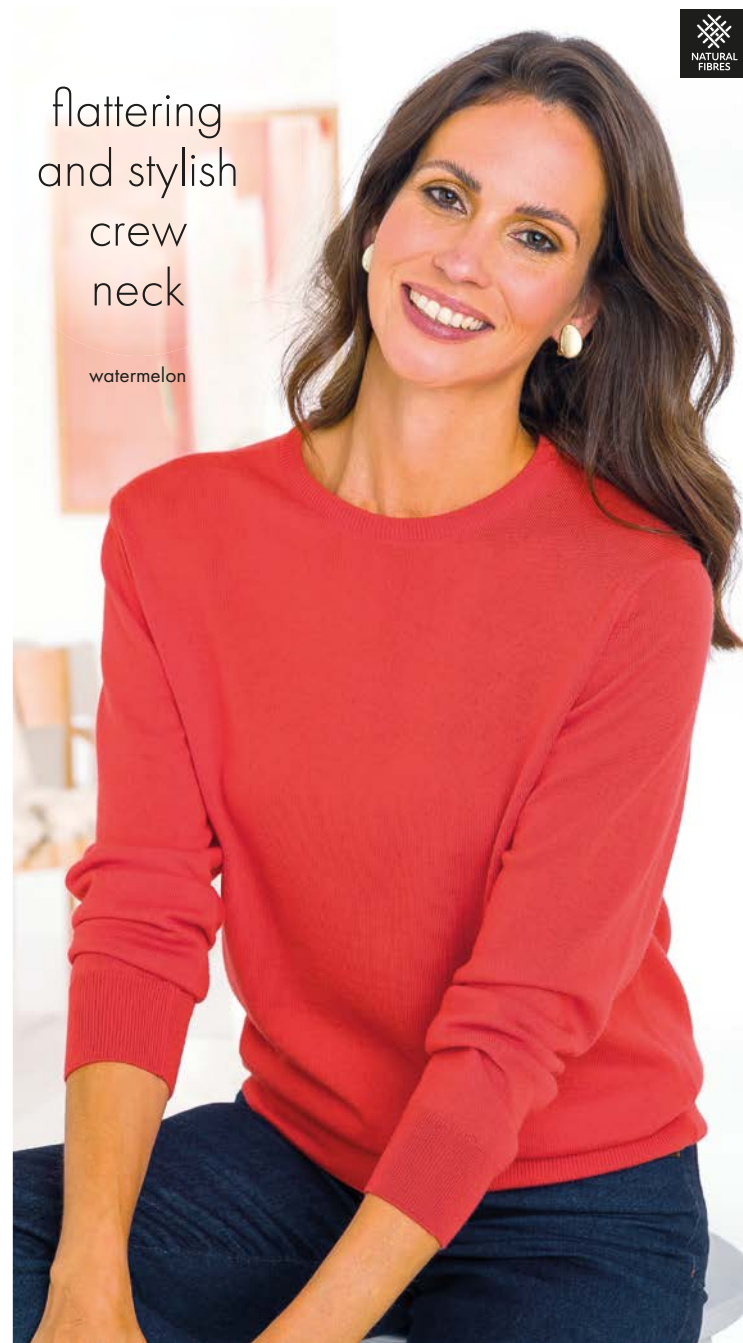
L (40-42") XL (42-44") XXL (46-48")

GF5 ST

£49 £25

flattering
and stylish
crew
neck

watermelon



merino long sleeve crew neck

A classic wardrobe staple you can't be without. Flattering crew neck style knitted in superior 21 gauge fine merino wool with fully fashioned sleeves. Ribbed neck, hem and cuff welts. Back length approx. 24 1/4". Machine washable.

Sizes 8-24

3HJ

£75



talulla
cardigan

denim
jeans
see page
44



ebony
jacket

ebony jacket

This new comfortable style is a great between seasons buy and perfect for layering. Contemporary edge to edge style has a shawl collar and patch pockets. Cut from easy-care 59% polyester/37% cotton/4% elastane. Herringbone design in wardrobe staple colours of cream, navy and camel. Back length approx. 27". Machine washable.

Sizes 10-24

JK9 MX £79

talulla cardigan

Super versatile wrap style cardigan with belt. Ultra soft blend of easycare 55% lambswool/45% cotton with a relaxed structure and pure sophistication. Back length approx. 30". Machine washable. Opal.

XS (38") S (42") M (46") L (50") XL (54")

HY6 OP £105



maggie
blouse

three quarter sleeve blouses

Three quarter sleeved style blouses in pure cotton with a straight hem and side vents in timeless floral prints. Back length approx. 28". Machine washable.

Sizes 8-24

HW3 MX maggie £59

HZ9 FL sally £59

hannah skirt

Cut from pure Austrian silky cotton with a fully elasticated waistband for a comfortable fit. Easywear, pull on style with side seam vents for ease of walking. Machine washable. Navy.

Sizes 10-24

GE6 NB length 27"

GE7 NB length 30"

GE8 NB length 33" £75



sally
blouse

new

hannah
skirt



**£5
off**

gillian
blouse

denim
skirt

gillian blouse

Pure cotton checked blouse featuring shades of peach, aqua and bluebell. Mock turn back sleeve, straight hem and side vents. Back length approx. 28". Machine washable.

Sizes 8-24

GP2 CK £55 £50
if purchased before 04.04.24



denim
straight
skirt

denim

Separates you will turn to every day for a timeless and go anywhere look. Our favourite denim fabric is cut from 98% cotton/2% elastane to give a supremely comfortable fit. Machine washable.

Sizes 10-24

denim straight skirt

Straight skirt with back zip and button fastening with a centre back vent. Front pockets, belt loops and contrast top stitching for added detail. Machine washable.

8WK IN length 26"

£65

denim skirt

Panelled 'A' line skirt with back zip and button fastening. Side waist elastication for comfort and useful front pockets.

Contrast top stitching.

4SA IN length 27"

4SB IN length 30"

4SC IN length 33"

£75



denim
jacket

timeless, versatile denim separates

denim jacket

What could be a better addition to our best selling denim collection than a new style denim jacket? Shorter style zipped jacket featuring mock breast pockets. Twin needle, contrast over stitching for added detail and front pockets. Back length approx. 24".

JN4 IN

£89

denim jeans

High waist with front zip and button, side waist elastication and belt loops. Two pockets front and back. Straight leg.

3LH IN inside leg 28"

3LI IN inside leg 30"

£65



new colour

pink carla
cardigan
and
kathy top
see pages
31-32

denim
jeans



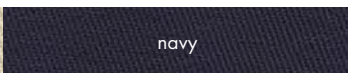
beige



navy



beige



navy



olive

chino separates

Softly brushed pure cotton twill separates. Machine washable. All styles available in all colours.

Sizes 10-24

chino skirt

Panelled 'A' line chino skirt with back zip and button. Side waist elastication and front pockets. Navy, Beige, Olive.

3C7 length 27"

3C8 length 30"

3C9 length 33"

£79

chino zip jacket

Casual chino zip front jacket perfect for everyday use. Featuring two mock front flap pockets, two useable side pockets and functional cuff buttons. Softly brushed pure cotton twill. Machine washable. Back length approx. 24". Navy, Beige, Olive.

GT3

£79

chino trousers

Classic style with front zip fastening, side waist elastication, side pockets and belt loops. Navy, Beige, Olive.

258 inside leg 28" **259** inside leg 30"

3FX inside leg 32"

£75 £70

if purchased before 04.04.24



olive
chino zip
jacket



pale blue
jodie top
see page
26

navy
chino skirt



navy
chino zip
jacket

**£5
off**

beige
chino
trousers



alina
leisure
cowl neck

alina
leisure
trousers



alani
leisure top

alina

Beautifully soft Italian cotton interlock, the perfect casual leisurewear separates. Machine washable.

alina leisure cowl neck

Easy to wear style works beautifully with the matching trousers or worn separately. A perfect wardrobe staple. Back length approx. 26". Wisteria.

Sizes S (43") M (47") L (51") XL (55")

HT6 LC £59

alina leisure trousers

Easy to pull on and wear, combining both comfort and style, they are a wardrobe essential. Wisteria.

Sizes S (26") M (30") L (34") XL (38")

HT7 LC inside leg 30" £52



new
hallie
leisure top

timeless
casual wear
look stylish,
feel great

cotton jersey leisure tops

Flattering crew neck style with short sleeves and a straight hem. Cut from pure, super soft Austrian cotton jersey. These easy to wear leisure tops will be a great addition to your wardrobe. Back length approx. 24½". Machine washable.

XS (30-32") S (34-36") M (38-40")
L (42-44") XL (46-48")

JN6 ML	alani	£45
JF6 YL	hallie	£45
JE3 FL	charley	£45
JD7 ML	scarlett	£45
GF7 NV	katie	£45

denim
jeans
see page
44



charley



scarlett



katie



pink



lilac

cantaloupe

blue

long sleeved leisure polos

This casual long sleeved style polo is cut from luxurious Austrian silky cotton jersey. Elegant collar, three button placket, straight hem and side vents for comfort. Machine washable. Cantaloupe, Lilac, Pink, Blue.

XS (30-32") S (34-36") M (38-40") L (42-44") XL (46-48")

£55

£55

leisure trousers

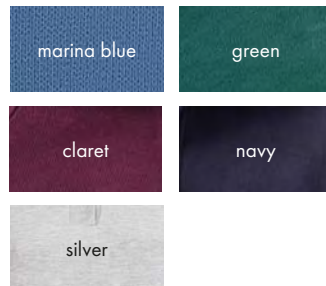
Ideal every day wear is a perfect wardrobe staple, with fully elasticated waist and side pockets. Cut from 80% cotton/20% polyester. Machine washable.

S (10-12) M (14-16) inside leg 29"

L (18-20) XL (22-24) inside leg 30"

4XT

£42



leisure tops

At home or outside, our leisurewear is an easy-to-wear style for every day. Trimmed with co-ordinating fabric. 80% cotton/20% polyester with a softly brushed inner. Machine washable.

sweatshirt

S (40") M (44") L (48") XL (52")

gilet

S (43") M (47") L (51") XL (55")

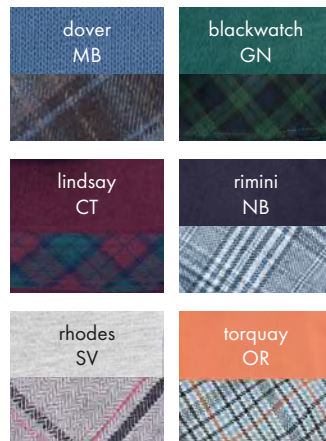
cardigan

S (42.5") M (46.5") L (50.5") XL (54.5")

6NE sweatshirt £55

6HC gilet (fully lined) £59

6CE cardigan £59



dover sweatshirt



dover fully lined gilet



dover cardigan



easy to
wear
style

dover fully
lined gilet



marina
blue
leisure
trousers

angela



abby



gail



classic white blouses

tina



classic white blouses

Classic white blouses cut from easycare 75% cotton/25% polyester seersucker. Machine washable.

Sizes 8-24

angela blouse

Cut from white 75% cotton/25% polyester seersucker offering durability, increased air circulation and breathability. Revere collar and a short sleeve with mock turn-back hems. Back length approx. 21½". Machine washable.

5DK WT

£65

tina blouse

Timeless blouse made with seersucker 75% cotton/25% polyester. Classic peter pan collar, short sleeves, and mock turn-back sleeve hems. Back length approx. 24½".

6CX WT

£55

abby blouse

Cut from white 75% cotton/25% polyester seersucker offering durability, increased air circulation and breathability. Collarless round neck style with side seam vents, and straight hem. Back length approx. 28". Machine washable.

5DM WT

£55

gail blouse

Elegant three-quarter sleeve, revere collar, straight hem with side vents. Back length approx. 27".

6AK WT

£59

maggie blouse
see page
42

june skirt

june

A stylish lightweight fabric, ideal for warmer days. 39% recycled polyester/39% organic cotton/19% nylon/3% elastane with a fabulous drape. Machine washable.

june skirt

This pull-on skirt will be an everyday favourite, with fully elasticated waist for all day comfort. Opal.

S (30") M (34") L (38") XL (42")

JH2 LB length 27"

JH3 LB length 30"

JH4 LB length 33" **£75**

dakota blouse
see page
75

june trousers

june trousers

A simple pull on trouser for everyday wear, fully elasticated waist and stitched front seams, combining comfort and style. Opal.

S (31½") M (35½") L (39") XL (43")

JH5 LB inside leg 28"

JH6 LB inside leg 30" **£69**



merino turtle necks

This generously sized sweater in fine 21 gauge merino wool has become a customer favourite. With a flattering turtle neckline, comfortable raglan sleeves and a wide choice of colours, this is a great way to update your wardrobe. Back length approx. 24¼". Machine washable.

Sizes 8-24
834

£75



bestselling
supersoft
fine
merino

coral





navy
classic
blazer

navy
sandown
trousers
see page
62

classic blazer

Single breasted, fully lined traditional shape cut from 54% polyester/44% wool/2% lycra. Jetted and flap pockets. Back length approx. 28". Dry clean. Navy.

Sizes 10-24

5ST NB

£179



pale blue
merino
short sleeve
crew
see page
10

torquay
straight
skirt

torquay

Smart and supremely comfortable to wear. Classic wool rich check in tonal shades of cantaloupe, pale blue and navy. 55% cotton/10% wool/15% polyester/15% acrylic/5% other fibres. Machine washable.

Sizes 10-24



white silky
cotton
blouson top
see page
7

torquay
bias
skirt

torquay straight skirt

A classic style that flatters the figure, while clever details such as the generous back vent, side elastication, back zip and button fastening add comfort to this classic skirt.

HZ7 CK length 26"

HZ8 CK length 28"

torquay bias skirt

With its figure flattering cut, it is always a pleasure to wear. Fully lined with zip and button fastening and side waist elastication.

HZ4 CK length 27"

HZ5 CK length 30"

HZ6 CK length 33"

£85

£95

torquay
trousers



coral
merino
turtle neck
see page
54

torquay trousers

This comfortable must-have trouser with handy side pockets, front zip and fully elasticated back, has a slightly tapered leg and will soon become your new favourite.

HZ2 CK inside leg 28"

HZ3 CK inside leg 30"

£85



chatham
jacket

chatham
skirt

chatham

Heritage inspired, medium weight pure wool fabric in a classic dark blue, woven and dyed for us in the UK. Dry clean only.

Sizes 10-24

chatham jacket

Beautiful tailored jacket that combines style with practicality making it so easy to wear. Fully lined with three button fastening and front pockets.

HC2 NB £195

chatham skirt

Simply a classic, this new fully lined style tie belt skirt is smart and stylish. Designed with pockets, back zip and side elastication for comfort.

HC3 NB length 27"

HC4 NB length 30"

HC5 NB length 33" £125

loden

half
lined

charcoal

loden

chocolate

navy

oatmeal

navy marl

flannel trousers

Extremely smart and sumptuously soft to the touch. Luxurious, half lined trousers in a wool rich flannel fabric. Designed to offer a flattering fit including front zip and button fastening with front pockets and side waist elastication. 59% wool/39% polyester/2% elastane. Machine washable.

Sizes 10-24

4WD inside leg 28"

4WE inside leg 30"

£95

felicity
blouse

felicity
skirt

felicity

A timeless classic flower design in the perfect blend of colours. Cut from our soft pure Austrian silky cotton jersey. Machine washable.

Sizes 8-24

felicity blouse

Softly styled, lovely to wear, long sleeve blouse with straight hem and side vents. Back length approx. 27".

HV5 BL

£75

felicity skirt

Swish comfortably through the day in our fully lined skirt, with side seam pockets and back waist elastication.

HV6 BL length 27"

HV7 BL length 30"

HV8 BL length 33" £89

white
jodie top
see page
26

felicity
skirt



peppermint
turtle neck



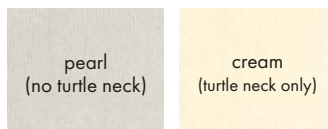
pearl
'v' neck



lilac
cardigan



lilac
turtle neck



cotton/cashmere knitwear

Supersoft 85% cotton/15% cashmere. Machine washable.
Lilac, Pearl, Pale pink, Peppermint, Cream (turtle only).

Sizes 8-24

6H2	turtle neck	£69
6G7	cardigan	£75
CW4	'v' neck	£69



megan
blouse
**£5
off**

perfect for
warmer
weather

callie
blouse
**£5
off**

alison blouse

Timeless, seersucker stripe blouse in shades of pale pink and pale blue on a white base. Cut from easycare 98% cotton/2% elastane. Short sleeved style with a straight hem, side vents and mock turn back sleeves. Back length approx. 28½". Machine washable.

Sizes 8-24

JL9 ST £59 £54

megan blouse

Pure cotton, soft pastel checked blouse. Short sleeved style with a straight hem and side vents. Ideal for layering and can be worn tucked in or left open and out. Back length approx. 28". Machine washable.

Sizes 8-24

JB3 CK £59 £54

callie blouse

Traditional, pale blue and white seersucker stripe blouse. Cut from easycare 98% cotton/2% elastane. Short sleeved style with a straight hem, side vents and mock turn back sleeves. Back length approx. 28". Machine washable.

Sizes 8-24

JN2 BL £59 £54

**£5
off**

new
alison
blouse



navy
easycare
pull on
trousers
see page
19

if purchased before 04.04.24



barbara blouse

navy sandown skirt see page 66



dee blouse

mix and match
your wardrobe
ready for spring

dee blouse

Classic short sleeve style cut from pure cotton. Mock turn back sleeves with a straight hem and side vents. Pretty floral design in soft hues of cornflower and duck egg on an ecru base. Back length approx. 28". Machine washable.

Sizes 8-24

JC5 MX

£55

barbara blouse

Classic short sleeved style cut from pure cotton. Mock turn back sleeves with a straight hem and side vents. Pretty floral design in shades of turquoise, cornflower and cyclamen on an ecru base. Back length approx. 28". Machine washable.

Sizes 8-24

GK3 FL

£55



stone



sandown trousers

Trousers you will turn to everyday for their classic looks, great comfort and easycare convenience. Flat front style with front zip and button fastening. Front pockets and side waist elastication. 54% polyester/44% wool/2% lycra machine washable. Fourteen colours as shown.

Sizes 10-24

waist measurements to fit

10 (27-29") 12 (29-31") 14 (31-33")

16 (33-35") 18 (35-37") 20 (37-39")

22 (39-41") 24 (41-43")

55A inside leg 28"

55B inside leg 30"

30D inside leg 32"

£89



sienna edge to edge cardigan
Knitted in luxuriously soft, pure lambswool. This contemporary edge to edge style cardigan has a shawl collar and pockets. Back length approx. 28". Machine wool wash.
XS (38") S (40") M (42") L (44") XL (46")
6A6 £89

pale green



ellen waistcoat and davina blouse

ellen waistcoat
Add a touch of luxury to your wardrobe with this edge to edge style waistcoat. Knitted in pure, soft lambswool with moss stitch to front with cable knit hem welt and plain knit back. Back length approx. 23½". Machine wool wash. Carnation.
XS (35½") S (39½") M (43½") L (47") XL (51")
FW2 PK £65

davina blouse
Stunning floral garden patchwork design Made with Liberty Fabric and cut from Tana Lawn®. Pretty soft shades of bouquet, bluebell, lemon and apple on an ecru base. Classic long sleeved style with a straight hem and side vents. Back length approx. 28". Machine washable.
Sizes 8-24
JB2 ML £89



new
davina blouse

light olive pull on sandown trousers see page 76



new
candace
blouse

navy
sandown
skirt



heidi
blouse

lottie
blouse

candace blouse

Stunning hydrangea design in classic white and China blue. Pure cotton poplin three quarter sleeved style with a straight hem and side vents. Made with Liberty fabric. Back length approx. 28". Machine washable.

Sizes 8-24

JA7 FL

£89

heidi blouse

Charming floral print in shades of lemon, sage and rose on an ecru base. Classic short sleeve style with mock turn back sleeves and a straight hem. Made with Liberty Fabric and cut from Tana Lawn®. Back length approx. 28". Machine washable.

JE9 FL

£85

lottie blouse

Classic short sleeve style with mock turn back sleeves and a straight hem with vents. Made with Liberty Fabric and cut from Tana Lawn®. Ditsy floral print in soft pastel pinks, blues and greens on a white base. Back length approx. 28". Machine washable.

Sizes 8-24

JB9 FL

£85



pale blue



sandown skirt

Flattering classic and beautifully designed. This fully lined panelled 'A' line style comes in a lightweight wool blend for drape and comfort. Back zip, button fastening and side waist elastication. 54% polyester/44% wool/2% lycra. Machine washable.

Sizes 10-24

waist measurements to fit

10 (28-30") 12 (30-32") 14 (32-34")

16 (34-36") 18 (36-38") 20 (38-40")

22 (40-42") 24 (42-44")

666 length 27"

667 length 30"

670 length 33"

£95



marilyn
blouse



lucille
blouse



fiona
blouse

stylish floral blouses

Classic style blouses Made with Liberty Fabric and cut from Tana Lawn®. Machine washable.

Sizes 8-24

fiona blouse

Long sleeved and flattering soft shoulder pleats. Pretty floral print in muted shades of sapphire, pale blue, cinnamon and camel. Back length approx. 26".

HL9 FL £89

marilyn blouse

Pure cotton poplin. Pretty floral print in crisp shades of bluebell, white, navy and opal on a pale blue base. Long sleeved style with a straight hem and side vents. Back length approx. 28".

**Sizes 8-24
HL8 FL £89**

lucille blouse

A distinctively feminine, bright multi floral design. Long sleeved style with a straight hem and side vents. Back length approx. 28".

HL7 FL £89

merino 'v' neck sweater

A great basic with flattering fit, this 'V' neck style with ribbed hem and cuff welts will be an ideal addition to your wardrobe. Knitted in premium supersoft fine 21 gauge merino wool. Back length approx. 24 1/4". Machine washable.

Sizes 8-24

199

£75



lemon



watercress

plum

mulberry

cherry

cyclamen

watermelon

coral

rose

tawny

camel

lemon

apple

opal

sage

jade

navy

sapphire

bluebell

turquoise

aqua

pale blue

- watercress
- plum
- tawny
- cherry
- bluebell
- camel
- aqua
- sapphire
- olive
- grey
- black
- sage
- mulberry
- navy

merino waistcoat

A great between seasons buy knitted from supersoft fine gauge merino wool. Finely ribbed welt, front patch pockets and colour co-ordinated brass buttons. Style with any of our separates for an elegant look. Back length approx. 23" Machine washable. XS (34") S (38") M (41") L (45") XL (49")

605

£72



mulberry



ophelia blouse

pure viscose



angelica blouse

stylish floral blouses

Classic, elegant blouses Made from Liberty Fabric. Machine washable. Sizes 8-24

ophelia blouse

A delicate floral design on pure softly draping viscose in shades of opal and olive on a cream base. Long sleeved style, straight hem and side vents. Back length approx. 28½".

HJ4 FL

£89

angelica blouse

Pure cotton classic long sleeved style with a straight hem and side vents. Floral print in muted tones of mimosa, dusky rose, sage and cornflower on a white base. Made with Liberty Fabric and cut from Tana Lawn®. Back length approx. 28".

JD2 FL

£89



new

marcie blouse

navy sandown pull on trousers see page 76

marcie blouse

Long sleeved style with a straight hem and side vents. Vibrant jewel colours of jade, fuchsia, turquoise and burnt orange are distinctive on the navy base. Back length approx. 28".

JC9 FL

£89

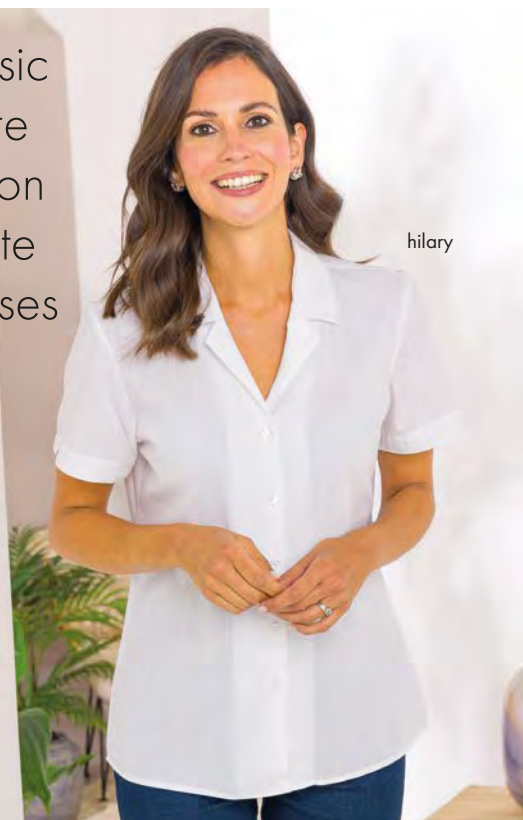


erin

judy

audrey

classic pure cotton white blouses



hilary

classic white blouses

hilary rever blouse

Pure cotton elegant blouse with delicate self stripe, rever collar and straight hem. Short sleeved style with mock turn back hems. Back length approx. 26¾".

Sizes 8-24

2IH WT

£55

erin blouse

Mandarin collared style blouse cut from pure cotton with delicate self stripe. Straight hem and side vents. Back length approx. 25¼".

Sizes 8-24

2LO WT long sleeve £59
2QH WT short sleeve £55

judy blouse

Classic white blouse cut from pure cotton with delicate self stripe. Machine washable. Feminine three quarter length sleeve style with flattering "V" neckline. Back length approx. 26¾". Machine washable.

Sizes 8-24

3GA WT

£59

audrey blouse

Pure cotton classic style with delicate self stripe and gently rounded hem. Short sleeved style with mock turn back hems and long sleeved with button cuffs. Back length approx. 28". Machine washable.

Sizes 8-24

168 WT long sleeve £59
169 WT short sleeve £55

watermelon
merino
collared
'v' neck



victoria skirt
(pre-order
Mid April)

victoria skirt

This feminine, softly brushed pure cotton skirt is ideal for many occasions. The prettiest floral print in shades of cinnamon and pale blue on a classic navy base will make it a wardrobe favourite. Easy to wear, two button waist fastening, side pockets, side waist elastication and unpressed pleats front and back. Machine washable. Pre-order for Mid April delivery.

Sizes 10-24

JS6 NB length 27"

JS7 NB length 30"

JS8 NB length 33"

£79

watercress



watercress

tawny

bluebell

opal

cream

mulberry

sapphire

viola

lemon

sage

watermelon

pale blue

duky pink

aqua

merino collared 'v' neck

Combat seasonal chills with this wonderfully soft, fine 21 gauge, premium merino wool sweater with raglan sleeves. Finely ribbed cuffs, collar and welt. Back length approx. 23½". Machine washable.

XS (33") S (37") M (41") L (45") XL (49")

5AB

£75



ruffle sweater

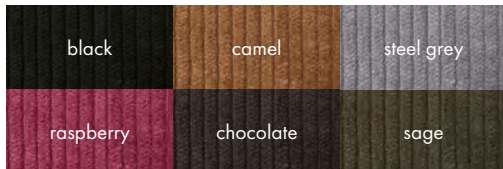
A wardrobe staple made extra special! Knitted in a fine luxurious 21-gauge merino wool with a pretty, feminine ruffle neckline and ruffle sleeve cuffs. Raglan sleeves and ribbed welt. A perfect piece for any occasion. Back length approx. 23½". Machine washable.

Cream, Sky, Blush.

Sizes 8-24

CT9

£85



corduroy trousers

Relaxed fit with front zip fastening, side waist elastication, side pockets and belt loops. Pure cotton corduroy with a luxurious soft pile. Machine washable.

Sizes 10-24

081 inside leg 28"

082 inside leg 30"

£99



merino cowl neck sweater

Enjoy superior comfort with this elegant cowl neck style sweater. The flattering neckline sets this style up as a season must have! Knitted in luxuriously soft, fine 21 gauge merino wool. Set in sleeves with ribbed hem and cuffs. Back length approx. 24½". Machine washable.

Sizes 8-24

4NG

£85



guide to size & measurement size and fit Our garments are generously cut and our skirts and trousers feature waist elastication for comfort. Please refer to our size chart to ensure the best fit.

inside leg Measured from the top of the inside seam to hem.

length Jackets, coats and dresses are measured from nape of the neck to the hem. Skirt lengths from below the waistband to the hem.

Size			To Fit Bust	To Fit Waist	To Fit Hip
XS	8	inches	32-34	23-25	33-35
		cms	81-86	59-64	84-89
S	10	inches	34-36	25-27	35-37
		cms	86-91	64-69	89-94
	12	inches	36-38	27-29	37-39
		cms	91-96	69-74	94-99
M	14	inches	38-40	29-31	39-41
		cms	96-101	74-79	99-104
	16	inches	40-42	31-33	41-43
		cms	101-106	79-84	104-109
L	18	inches	42-44	33-35	43-45
		cms	106-111	84-89	109-114
	20	inches	44-46	35-37	45-47
		cms	111-116	89-94	114-119
XL	22	inches	46-48	37-39	47-49
		cms	116-122	94-99	119-125
	24	inches	48-50	39-41	49-51
		cms	122-127	99-104	125-130

garment care General care guides are given in the catalogue description. Also detailed care instructions can be found on the care label sewn into your garment. For further guidance call our customer service operators on 0330 024 1945.

fabric swatches

Swatches are available of our designs - so if you would like a particular swatch before ordering please just telephone us.

alteration service

Skirts, trouser and nightwear lengths are available as specified in the catalogue. We do, however, offer an alteration service should you prefer a shorter length. Let us know on the order form what you would like the altered length to be. Add £6 for trousers, £8 for skirts and nightwear to your order form. Please note: all round knife pleated skirts cannot be altered. Items altered to a non-standard length are non-returnable unless there is a quality issue.

no time limit guarantee

If at any time during its lifetime, an issue arises with the quality of the product please return it for an exchange or immediate refund in full.

how to order

phone UK 0330 024 1945
overseas 00 44 16977 45130

Our UK-based customer service team is here to take your calls Monday-Friday 9am to 6pm. Saturdays and Bank Holiday Mondays 9am-5pm. We have an answerphone service for late evening and Sunday calls. All UK calls are charged at standard local rate. Your credit/debit card will not be debited until your order has been despatched. **Post** - Your order form complete with your card details or sterling cheque made payable to **The Classic Boutique** using the Freepost address on the order form.

online at www.theclassicboutique.com

free & easy returns

We enclose a FREEPOST RETURN LABEL with all UK orders. Simply affix the label to your parcel and hand in at any post office or visit the Royal Mail website to arrange collection from home.

delivery

Tracked Mainland UK - Our UK delivery services are tracked. Please supply your email address/mobile phone number to receive your tracking number.
Royal Mail Standard - Delivery arrives in 2-3 working days. **£5.50**
Royal Mail Priority - Orders placed by 2pm Monday-Friday will be sent out on the same day on a first class service, arriving in 1- 2 working days. **£8.50**
Royal Mail Next Day - Orders placed by 2pm Monday-Friday will be sent out on the same day, guaranteed to arrive with you the next working day by 1pm (excludes bank holidays). This service requires a signature on receipt. **£10.00**
Royal Mail Local Collect - Delivery arrives in 2-3 working days. Select your local post office collection point to pick your parcel up at your own convenience. **£5.50**
Royal Mail Overseas - Delivery arrives in 7-10 working days. **£20.95**
EU (Countries serviced by Royal Mail delivery duty paid only)
ROW (Additional tax & duties levied on import may be payable on receipt. Please note these additional charges are the responsibility of the customer).

privacy policy

a copy of the policy is available at: www.theclassicboutique.com or can be requested by phone.



dakota blouse

This gorgeous, new style blouse is designed to easily pop over the head. Generously sized and cut from pure, natural viscose for excellent drape. One button fastening at the neckline on centre placket for ease of dressing. Vanilla floral print on a soft teal base and perfect for dressing up or down. Back length approx. 28½". Machine washable.

Sizes 8-24
JD9 MX

£59



£10 off

pear	navy
sapphire	peacock
pale blue	tawny
stone	light olive
black	airforce blue
rust	slate
bottle green	pearl
damson	coral

sandown pull-on lightweight trousers

Be comfortable without compromising on style in our pull-on Sandown trousers. With full back waist elastication, soft front pleats, side pockets and a slightly tapered leg. Lightweight and easycare 54% polyester/44% wool/2% lycra. Machine washable.

Sizes 10-24
waist measurements to fit
10 (25-27") 12 (27-29") 14 (29-31")
16 (31-33") 18 (33-35") 20 (35-37")
22 (37-39") 24 (39-41")
3Y2 inside leg 28"
3Y3 inside leg 30" ~~£85~~ £75
if purchased before 04.04.24



cream
turtle
neck



wisteria
crew
neck



pale blue
polo
neck



pure cotton separates

Pure cotton jersey tops available in three styles, ideal for layering. All three styles have elastane in the cuffs for comfort. Polo and turtle also have elastane in the neck. Generously sized. Machine washable.

Colours as shown.

XS (34") S (38") M (42") L (46") XL (50")

044 turtle neck £35

4NF crew neck £35

049 polo neck £35 (Save £14 buy 2 for £56)



cable knit
lambswool

silver

lambswool cable cardigan

A basic that's anything but! Crew neck style in pure, supersoft lambswool with front cable knit design and plain back with colour co-ordinated buttons. This perennially popular cardigan offers exceptional quality and a flawless finish. Back length approx. 24". Cool machine wash

XS (39") S (41") M (43") L (45") XL (47")

503

£79





silver



navy



belinda blouse

Cut from warm handle pure cotton. Long sleeved style with collar, back yoke, button cuffs and gently rounded hem. Machine washable. Back length approx. 28".

Sizes 8-24

5UC

£59

double layer trousers

These best selling trousers are a wardrobe staple and will keep you cosy and comfortable whatever the weather. Woven with an inner fleece layer for added warmth. Flat front style with front zip and button fastening. Front pockets and side waist elastication.

64% polyester/34% rayon/2% spandex.

Machine washable.

Sizes 10-24

blackwatch

4EH BW inside leg 28"

4EJ BW inside leg 30"

£79

navy

3K5 NB inside leg 28"

3K6 NB inside leg 30"

£79

claret

DP8 CT inside leg 28"

DP9 CT inside leg 30"

£79



linen



lambswool sweater

Combat seasonal chills with our flattering crew neck sweater knitted in pure, sumptuously soft lambswool with ribbed cuffs, welt and neckband. Back length approx. 24½". Cool machine wash.

XS (38") S (40") M (42")

L (44") XL (46")

509

£75





merino
long
sleeved
polo



merino tie
'v' neck

merino knitwear

Knitted in luxurious pure extra fine 21-gauge merino wool.
Machine wool wash. Cream.

merino long sleeved polo

XS (32-34") S (34-36") M (38-40")
L (42-44") XL (46-48")

FF8 CR £79

merino tie 'v' neck

Sizes 8-24

CD3 CR £79



dusky pink
merino
collared
'v' neck
see page
72

amanda
skirt

amanda skirt

Smart and supremely comfortable to wear. Mini cotton rich check featuring pure wool for warmth in shades of dusky pink, slate, chocolate and cobalt to compliment and freshen any transitional wardrobe. Fully lined and figure flattering bias cut style with zip and button fastening. 50% cotton/15% wool/15% polyester/15% acrylic/5% other fibres. Machine washable.

Sizes 10-24

JA2 CK length 27"

JA3 CK length 30"

JA4 CK length 33"

£89



pure,
cosy, soft
lambswool

springtime

- azalea
- dusky rose
- springtime
- silver
- glacier
- storm
- amethyst
- ecru
- wedgwood

lambswool cable crew neck sweater

This softly styled cable knit sweater is knitted in pure, delightfully cosy and deliciously soft lambswool. All over cable design with ribbed cuffs, welt and neckband. Back length approx. 24½". Cool machine wash.

XS (38") S (40") M (42")
L (44") XL (46")

8UW £79



pintuck



lizzie



ruffle

stylish, classic blouses for all occasions

lizzie blouse

Beautiful long sleeved blouse in soft draping 50% cotton/50% viscose. Elegant floral design on a cream base. Classic style with long sleeves and soft shoulder pleats. Back length approx. 26". Machine washable.

Sizes 8-24

HH5 FL

£59

stylish classic blouses

Stylish blouses cut from soft handle 80% cotton/20% wool. Choose from either versatile pintuck with stand collar or pretty ruffle collar and cuffs. Machine washable. Cream.

Sizes 8-24

2NA CR pintuck

£75

492 CR ruffle

£75



cream
merino cowl
neck
see page
74

aubergine
needlecord
skirt



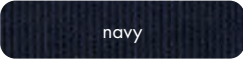
aubergine



olive



fawn



navy

needlecord skirt and trousers

Cut from 97% cotton/3% elastane adding a slight stretch to the fabric for comfort. Panelled 'A' line needlecord skirt with back zip and button fastening. Side waist elastication and useful front pockets. Needlecord trousers. Front zip and button fastening with belt loops, side pockets and side back waist elastication. Machine washable.

Navy, Olive, Aubergine, Fawn.

Sizes 10-24

needlecord skirt

6NR length 27"

6NS length 30"

6NT length 33"

£85

needlecord trousers

1W4 inside leg 28"

1W5 inside leg 30" £79



pintuck
blouse

olive
needlecord
trousers



classic soft handle blouse
Classic style with soft front shoulder pleats and back yoke. Luxuriously soft and comfortable 80% cotton/20% wool. Back length approx. 26¾". Ten colours as shown.
Sizes 8-24
395 £69



supersoft
Shetland
wool

soft peach

shetland cable cardigan
Knitted from supersoft Shetland wool in a moss stitch. Long sleeved style with collar and cable design to front, cuffs and welt. Eight button fastening.
XS (32-34") S (34-36")
M (38-40") L (42-44")
XL (46-48")
CU2 £85





new
kama
jacket
print

reversible



new
julipa
gilet
plain

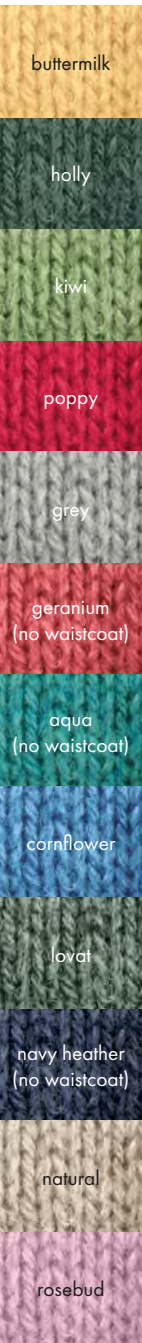
reversible



natural



holly



new
kama
jacket
plain

kama jacket

Our best selling, casual quilted jacket featuring a reversible inner to give two looks in one. A plain sapphire blue side or navy and ecru leaf design on the other. Cut from pure cotton with a stand collar, covered buttons, patch pockets and self fabric button loops. Back length approx. 28". Machine washable.

Sizes 10-24

JN5 SB

£99



new
julipa
gilet
print

julipa gilet

Our best selling, casual quilted gilet featuring a reversible inner to give two looks in one. A plain jade green side or a multi shade floral design on the other. Cut from pure cotton with a stand collar, covered buttons, patch pockets and self fabric button loops. Back length approx. 24". Machine washable.

Sizes 10-24

JP6 JD

£79

shetland knitwear

Knitted from supersoft Shetland wool. Specially washed for a luxurious soft finish. Hand wash. Available in all colours shown.

cardigan

XS (34") S (38") M (42") L (46") XL (48")

sweater

XS (36") S (38") M (40") L (46") XL (48")

waistcoat

XS (34") S (38") M (42") L (46") XL (50")

shetland cardigan

Fully fashioned sleeves and ribbed cuffs, welt and neck band. Tonal buttons. Back length 25".

023

£79

shetland sweater

Crew neck style in soft Shetland wool with ribbed cuffs, welt and neck band.

022

£75

shetland waistcoat

Front band ribbing, welt and armholes. Front patch pockets and tonal buttons. Back length 25".

4AC

£69



buttermilk



dark
purple
marcia
jacket

also
available
in navy



joan
gilet



kennedy
jacket

joan gilet

Stunning, padded, soft touch gilet with toggle drawstring waist, zip front and popper fastening placket. Floral print in tonal shades of blue and white on a navy base, sure to go with any outfit! Two external pockets and one internal button fastening pocket. 100% polyester. Back length approx. 27". Machine washable. **Sizes 10-24**

HR9 NV

£85

marcia jacket

Soft touch padded jacket that adds a splash of colour to your collection. Zip close with popper fastening placket, removable hood, two zipped outer pockets and one internal pocket. Toggle drawstring waist for comfortable fit and decorative detail to front. 91% polyester/9% nylon, lining 100% polyester. Back length approx. 30". Machine washable. Dark Purple, Navy.

Sizes 10-24

GW2 NV navy

£109

GW2 DP dark purple

£109

kennedy jacket

Stylish and practical showerproof printed jacket with zip front, popper fastening placket and two outer zip pockets and one internal button fastening pocket. Toggle drawstring waist for a comfortable fit. Removable hood also featuring toggle drawstring. 90% polyester/10% nylon, lining 100% polyester. Back length approx. 30". Machine washable. Navy. **Sizes 10-24**

HS2 NV

£89



mackenzie
jacket



new
gertrude
jacket

mackenzie jacket

Sleek and sophisticated navy showerproof jacket with contrasting nautical striped lining. Zip front, two popper fastening patch pockets and removable hood with toggle drawstring. 100% polyester. Back length approx. 29". Machine washable.

Sizes 10-24

HS3 NV

£85

gertrude jacket

Be ready for springtime showers with this showerproof floral jacket in tonal shades of jade and white. Zip fastening concealed by popper fastening placket. Silver coloured trims, two outer zip pockets and one internal button fastening pocket. Zip away hood with toggle drawstring. Back length approx. 29". 100% polyester. Machine washable.

Sizes 10-24

HS6 FL

£85

bertha jacket

Classic lightweight, showerproof parka style jacket, the perfect go-to for unpredictable spring weather. Toggle drawstring waist and hood for a comfortable fit. Rose gold trims, zip front and popper fastening placket. Two outer popper fastening pockets and one internal button fastening pocket. Back length approx. 30½". 100% Polyester. Machine washable. Cornflower.

Sizes 10-24

HS5 BL

£79



new
bertha
jacket



1 liberty print reversible hats

Exclusive hat Made With Liberty Fabric. Two popular designs in Tana Lawn®. Machine washable. **One size**

2Z4 PL pastel
2Z4 NV navy **£34**



2 nicky scarf

Geometric print scarf in striking shades of mustard, navy, champagne and white with hints of turquoise. 100% polyester, feels like silk. Machine washable. Approx. 70 x 70cm.

FA2 ML **£19**

3 rosamund scarf

Lively abstract floral print scarf in shades of bluebell, cyclamen, lemon, kiwi, and bottle green on a white base, featuring a pink border. 60% viscose/40% cotton. Machine washable. Approx. 180 x 70cm.

DR9 PK **£19**



4 forget-me-not scarf

Our exclusive, charming forget-me-not floral scarf in shades of sapphire, turquoise and white on a pale blue base, with orange accents and border. Printed onto pure silk. Approx. 52 x 52cm. Machine washable.

EX2 ML **£21**

5 carrie scarf

Versatile blue and champagne pure silk scarf featuring crescent moon and chevron designs in black and white. Hand wash.

Approx. 53 x 53 cm.
FY2 BL **£25**

6 nevei scarf

Colourful, abstract silk scarf in bright jewel tones with a viola border. Sure to add a little extra joy to your outfit! Approx. 53 x 53cm. Hand wash.

JA6 ML **£25**

7 rita scarf

Colour block silk scarf in shades of navy, lemon, pale blue and white. Approx. 53 x 53cm. Hand wash.

FY5 ML **£25**

8 tori scarf

Add a charming touch with this lemon print scarf on 60% viscose/40% cotton. Approx. 180 x 68cm. Machine washable.

AX5 LM **£19**

9 esme scarf

Elevate your ensemble with this sophisticated floral and spot print scarf. Shades of rose, dove, bluebell and mimosa on a cornflower and navy base. 100% polyester. Approx. 159 x 56cm. Machine washable.

HW9 FL **£19**

10 shauna scarf

Be bold with this beautiful scarf featuring shades of pale pink, cyclamen, black, champagne and white, with jade accents and border. 100% viscose. Approx. 198 x 90 cm. Machine washable.

HX9 ML **£19**

stylish, comfortable shoes



grey
(GY)
11.

navy
(NB)

11 mirabella shoe

Super comfortable and breathable, stylish slip on mesh-knit trainers are this seasons must haves.

Sizes 3-8 no half sizes
JT9 GY grey
JT9 NB navy **£45**



nude
(NU)
14.

black
(BK)
14.

14 blaze sandal

Elevate your style with our chic small black heel sandals in glossy patent leather. The gold design on the T-bar adds a touch of glamour. Ankle strap fastening with adjustable buckle provides a secure and comfortable fit.

Sizes 3-8 no half sizes
JW5 NU nude
JW5 BK black **£49**



12.
navy
(NB)

taupe
(TP)

blue
(BL)

12 st ives shoe

Flexible, lightweight, comfortable and all leather from the upper to the lining and insole. Elasticated lace makes it perfect to slip on and go.

Sizes 3-8 no half sizes
9N5 NB navy
9N5 TP taupe
9N5 BL blue **£59**



black
(BK)
15.

grey
(GY)

15 jacqui shoe

A wedge shoe featuring a contrast faux suede front with diamante detailing. Stylish and comfortable a perfect addition to your shoe collection.

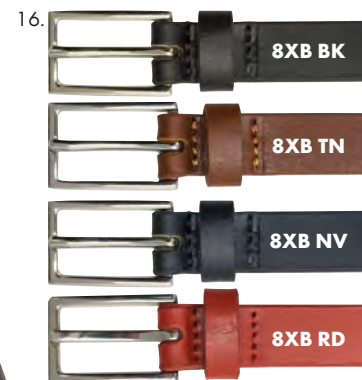
Sizes 3-8 no half sizes
HP3 BK black
HP3 GY grey **£39**



13 leather belts

Leather belts approx. 3cm wide
Sizes 10-24. Navy, Brown, Black.

5CK NB Navy
5HD BO Brown
5HD BK Black **£31**



16 narrow leather belts

Narrow leather belts approx. 2cm wide.
Sizes 10-24. Red, Navy, Tan, Black.

8XB **£22**



17 flutter shoe

Your ideal comfortable slip on summer shoe. With soft leather upper and lining features. Sure to compliment any outfit perfectly.

Sizes 36-42 no half sizes
JU4 ST stone
JU4 WT white **£69**



1 margot necklace

Delicate and refined silver coloured wire necklace with circle design in shades of pale blue, pale pink, sage, lilac and lemon. Approx. length 40cm. Clasp with adjustable extension chain.

JG9 ML £19

2 christa earrings

Brushed silver circle shape clip on earrings with textured stripe design, guaranteed to add a subtle touch of drama.

GV2 SV £19

3 tatum necklace

Sculptured statement necklace in shades of pink, bronze, green, gold and silver. Clasp with adjustable extension chain. Approx. 40cm.

AG9 ML £35

4 purdy earrings

Pearl effect clip on earring to add that sophisticated touch to your outfit.

GU8 PL £19

5 miriam earrings

Versatile style silver clip on earrings with overlap design.

GU7 SV £19

6 ayla necklace

Feel elegant with this longer length silver coloured necklace featuring pebble beads in a mix of shiny and matte finish. Approx. length 80cm. Clasp with adjustable extension chain.

JH8 SV £29

7 courtney necklace

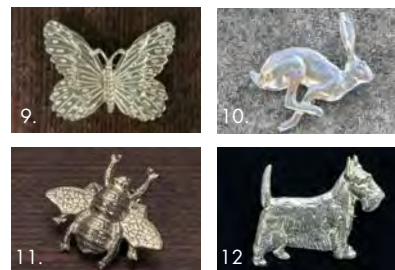
Make a style statement in this silver coloured necklace with large, hammered pebble shaped beads. Approx. length 42cm. Hook fastening with adjustable extension chain.

JH7 SV £35

8 bess earrings

Feel elegant with these delicate gold clip on earrings featuring a classic wave design.

GU9 GD £19



pewter brooches

Beautiful brooches handcrafted in pewter.

9 butterfly brooch

FX7 SV Approx. 3cm

£22

10 hare brooch

6R5 SV Approx. 4cm

£22

11 bee brooch

EX3 SV Approx. 3 x 2.5cm

£21

12 scottie dog brooch

DH7 SV Approx. 3cm

£22



14.

13 ladies reading glasses

Chic and stylish prescription reading glasses available in 4 strengths. Multi-colour, Black. Strengths 2, 2.5, 3, 3.5.

JU6 £16

14 ladies glasses chain

Handy fashion chains to keep your glasses safe and nearby. Silver, Multi.

JU7 £15

15 scarf rings

Handcrafted fine pewter scarf rings to add that finishing touch. Supplied in a presentation box.

3Z7 SV twig £21

6.5cm diameter

3Z8 SV garland £21

4.5cm diameter



15.

21.

16 dana handbag

Chic and simple leather zip top handbag with adjustable cross body strap. Inner and outer zipped compartments. Outer pocket with magnetic clasp fastening. 21cm wide x 21cm high. Dark Green.

HA9 GR

£62

17 leather half flap handbag

Soft and stylish leather handbag. Two useful inner compartments, zipped pockets and credit card storage. Finished with a magnetic stud fasten flap. Easily adjustable strap. 25cm wide, 19cm high. Navy, Black.

9ZP

£62

18 cora backpack

Stylish soft leather back pack, high in quality and durability. Adjustable straps, zip top compartment and outer magnetic stud compartment. 19cm wide x 26cm high. Black

HB7 BK

£69

19 leather bag

Leather zip top handbag with adjustable shoulder strap. Magnetic clasp fastening to front. Inner pockets with key fob and side zipped pocket. 28cm wide, 17cm high. Black, Navy.

1DQ

£62

20 leather shoulder bag

Classic leather handbag with full flap, adjustable shoulder strap and magnetic clasp fastening. Zipped inner and outer pockets. 25cm wide, 19cm high. Black, Navy.

1DR

£65

21 ladies umbrella

Bring a bit of joy to rainy days! Automatic umbrella from the Llewellyns range by Laurence Llewelyn-Bowen.

JV2 TL

£12



16.



17.



18.



19.



20.



soft,
lightweight
breathable
underwear

Slenderella
Beautiful Lingerie & Nightwear

vedonis french
neck cami

vedonis from slenderella

Traditional styles in seam free, lightweight breathable material in two options, pure cotton or thermal 50% polyester/50% viscose. Machine washable.

S (8-10) only in pure cotton
M (12-14) L (16-18) XL (20-22)

vedonis french neck cami
DM5 WT pure cotton £29
DM5 TH thermal £29

vedonis french neck vest
DM1 WT pure cotton £29
DM1 TH thermal £29

vedonis long sleeve top
DM4 TH thermal £39

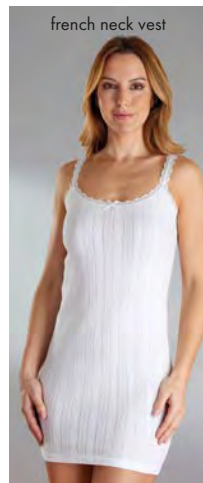
**vedonis embroidered
camisole**
FU5 WT camisole £29
95 alteration service

vedonis sleeveless top
DM2 WT pure cotton £29
DM2 TH thermal £29

vedonis short sleeve top
DM3 TH thermal £35

vedonis pantee
DM6 WT pure cotton £35
DM6 TH thermal £35

vedonis briefs (2 pack)
DM7 WT pure cotton £29



french neck vest



long sleeve top



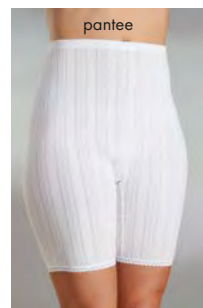
embroidered camisole



sleeveless top



short sleeve top



pantee



briefs (2 pack)

Gaspé lingerie from Slenderella

Soft, stretchy, anti-static microfibre fabric for a contouring fit. Cool and breathable, suitable for everyday wear. 86% polyamide/14% elastane. Machine washable. Black, White, Beige.
Sizes 10-20

gaspé lace camisole top
Adjustable thin straps with a floral lace overlay to bust area.
HR8 £29

gaspé full length slip
Plain modern style slip. 36" length.
HR6 £35

gaspé vest top
Plain, vest top style.
HR7 £25

gaspé waist slip
Elasticated waist slip. 26" length.
S, M, L, XL
HR5 £29

white black beige



cotton comfort brief
Pretty cotton comfort full midi brief. 95% cotton/5% elastane. Pure cotton gusset. Four pair pack. White, Pink.
S, M, L, XL
GM9 WT white £24
GM9 PK pink £24



gaspé lace
camisole
top
white



gaspé
full length
slip
beige



gaspé
vest top
white



gaspé
waist
slip
black

Buy any 2 vedonis items and save £4



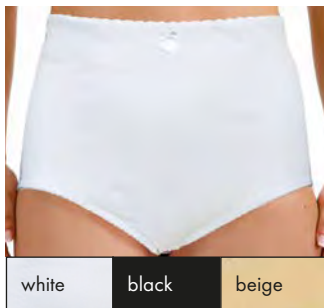
front fasten bra
Soft, pretty lace effect finish with easily adjustable shoulder straps. The front fastening design aids dressing. Non-wired. 95% cotton/5% elastane Hand wash.

Sizes 34-44" B-E cup
AQ6 white **£23**
FT6 black **£23**



embroidered bra
A soft cup, non wired comfortable every day bra. Pretty lace effect finish across the top on the cups. Wide easily adjustable straps for extra comfort. 89% polyester/11% elastane. Hand wash. White.

34-42" B-DD cup
FU9 **£23**



firm support girdle
Comfortable shapewear brief with a firm support front panel. 80% polyester, 20% elastane. Machine washable. White, Black, Beige.

Sizes M-XXL
HR4 **£20**



THE MAKER OF LINGERIE
SINCE 1886

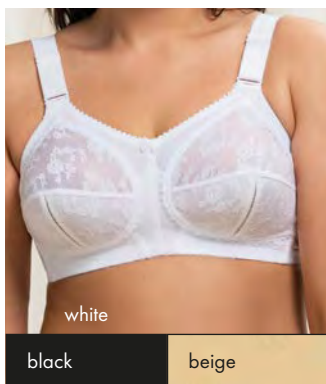
Classics by Triumph...
fashion with comfort and support
up to J cup!

doreen the world's best selling bra

Firm control, soft non-wired bras with stretch frame to ensure a good fit. Firm underband and broad straps for extra comfort. Stiffeners at sides to give support. Machine washable. Order with code, followed by cup and bust size.



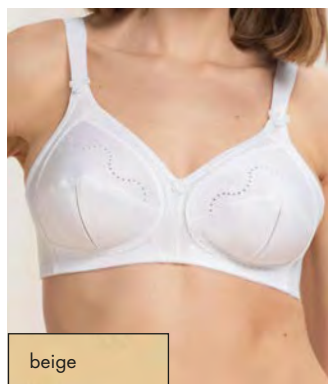
modern soft cotton bra
Soft cotton blend bra with high support. Moulded cups and padded straps. 39% cotton/38% polyamide/23% elastane. Hand wash. White.
32-48" A-C cup 34-46" D cup
34-44" DD cup
9R2 non-wired £40
34-48" B-D cup 34-46" DD cup
34-44" E cup
9R3 underwired £44



doreen bra
Classic best seller, 80% polyamide/13% elastane/7% cotton. Non wired. Machine washable.
Sizes 34-46" B, DD, E, F, G, cup
Sizes 34-48" C, D
Sizes 36-46" H cup
Sizes 36-44" J cup
176 white
3GJ black
2OT beige **£42**



elasti-cross + cotton bra
Cross over style with super soft contouring material for maximum comfort. Pretty embroidery. Adjustable straps. 60% cotton/15% polyamide/12% viscose/9% elastane/4% polyester. Machine washable. White.
Sizes 34-44" B, C & D cup
AV7 **£42**



doreen + cotton bra
Padded straps and hook and eye closure with low cut rounded back. 35% polyester/29% polyamide/22% cotton/13% elastane, 1% viscose. Non-wired. Machine washable.
34-44" B, C 34-46" D, DD, E, F, G cup
2BU White
3GS Beige (B, C, D, DD only) **£42**



elegant cotton bra
A double layered supportive soft cup bra with wide straps. Embroidered finish. 38% polyamide/35% cotton/22% elastane/5% polyester. Machine washable. White.
34-44" B, C, D & DD cup
9SN **£42**



amourette bra
Pretty lace design soft cup bra. Elastic fabrics ensure an optimal comfortable fit. 72% Polyamide, 22% Elastane, 6% Cotton. Machine washable. White.
Sizes 34-42" B, C & D cup
6ER **£36**



claudette bra
Non wired bra with soft cups made of supporting, elastic texture with lace inserts which provides great wearing comfort. 95% polyamide/5% elastane. Machine washable. White.
34-44"- B, C & D cup
FD8 **£28**



doreen delicate bra
Non-wired, light-weight soft lace with scalloped edging detail. Super-soft comfort pads and wide shoulder straps. 73% polyamide/22% elastane/5% viscose. Machine washable. White.
Sizes 34-46" B, D, DD, E, F cup
Sizes 34-48" C cup
Sizes 36-46" G cup
8TH **£42**



cotton beauty bra
Non wired bra cotton feel with decorative details. 80% Cotton/10% Polyamide/10% Elastane. Machine washable. White.
34-44"- B, C & D cup
FD9 **£30**

denier - everyday

Tights with stretch for comfort and fit, durable toe and band. Knee highs with durable toe and band. Hand wash. 95% nylon/4% elastane. Chiffon, Barely black.

1 tights
18 pair pack
M 34"-40" hip
L 40"-48" hip
2CE £30

2 knee highs
18 pair pack.
One size
2CC £24

30 denier - traditional

Stockings: smooth semi sheer leg and shadow toe.
Tights: reinforced body, gusset and shadow toe.
100% nylon. Hand wash. Sherry.

3 stocking
6 pair pack.
One size
2CB SH £38

4 tights
6 pair pack.
M - 5'6" up to hip 40"
L - 5'10" up to hip 48"
2CA SH £38



8 comfort top sock

Soft touch cotton socks in pretty floral design. Grey, Navy, Peach.

One size
FG2 £9 pair



9 cotton socks

Super soft cotton blend socks in a pretty floral design. 80% cotton /17% polyester/3% spandex. Navy, Turquoise.

One size
FT9 £9 pair



10 bamboo socks

Luxuriously soft touch socks in pretty floral designs. 70% bamboo/28% polyester/2% elastane. Machine washable. Red, Green.

One size 3-7
HN2 RD red £9 pair
HK9 GR green £9 pair



11 diabetic cotton sock

Diabetic cotton sock with a cushioned terry loop foot for extra comfort and protection. 90% cotton/9% nylon/1% elastane. Machine washable. Navy, Oatmeal, Black.

FF9 £10 per pair



ELBEO

Support tights and stockings with lycra for comfort. Hand wash. Café Crème, Haze

5 mirage light support

15 denier appearance.

tights S, M, L (Café Crème only) 2TC CC £9

stockings M, L (Café Crème only) 2TH CC £9

6 sheer magic medium support

20 denier appearance.

Tights S, M, L 2TD £10

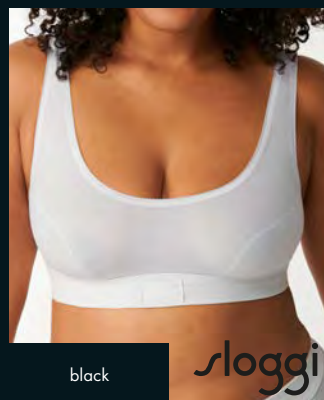
Stockings M, L 2TF £10

7 caresse firm support

30 denier appearance.

tights M, L, XL 2TE £12

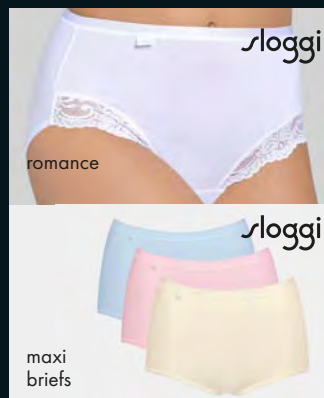
stockings M, L, XL 2TI £11



sloggi double comfort top

Pull on bra top with double soft, comfortable under bust band. 95% cotton/5% elastane. Machine washable. White, Black.

Sizes 34"-40"
2IU £22 each or 2 for £42



sloggi maxi romance brief

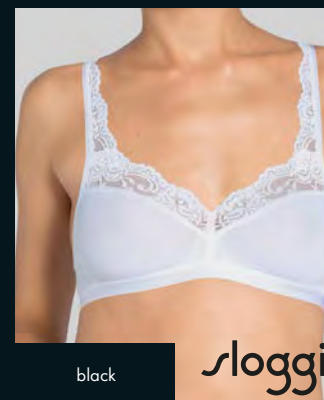
Feminine briefs with elastane woven into lace, giving a perfect fit with soft stretch comfort. 49% polyamide/44% cotton/7% elastane. Machine washable. White.

Sizes 10-24, 1 pair pack
2BW WT £17 each or 2 for £32

sloggi 3 colour maxi briefs

Best selling three colour maxi brief pack. Contains a pair of pale pink, pale blue and lemon. 95% cotton/5% elastane. Machine washable. Sizes 10-24

6PA ML £35



sloggi romance bra

Ultra fine cotton pull on bra. Elastane fibre woven into the top of lace gives a close fit to the body. 47% polyamide/35% cotton/18% elastane. Machine washable. White, Black.

Sizes 32"-40" A-C cup
3SL white (32-40 A-C) £29 each
FT8 black (34-40 A-C) or 2 for £56



sloggi double comfort maxi brief

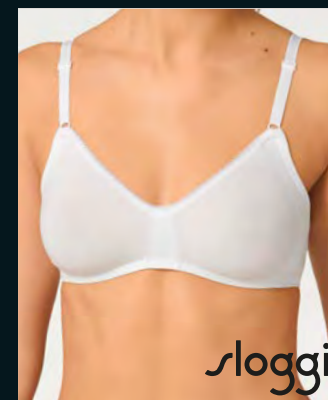
Superior comfortable brief due to the extra soft seamless tubular waistband and stretchable flat lock seams. 95% cotton/5% elastane. Machine washable. White, Black. Sizes 10-22

6ES £16 each or 2 for £30

sloggi maxi control brief

Comfortable briefs with tummy control panel for light support. 94% cotton/6% elastane. Machine washable.

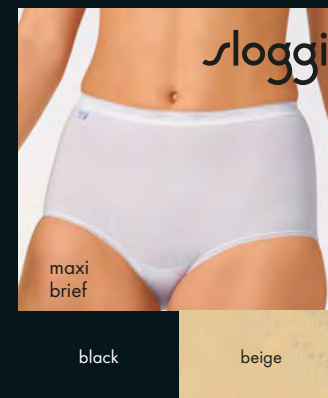
Sizes 10-24, 2 pair pack
2BX WT white £29
2BX SK beige £29



sloggi soft bra

An everyday soft bra with elasticated band along the underbust. Perfect fit and all day stretch comfort. Adjustable straps and back hook and eye fastener. 82% cotton/18% elastane. Machine washable. White.

Sizes 32"-38" A-C cup
6PB £22



sloggi maxi brief

High quality, fine cotton and Lycra briefs for a perfect fit with soft stretch comfort. 95% cotton/5% elastane. Machine washable. White, Beige, Black.

Sizes 10-24
175 3 pack £35

stylish cosy slippers



1 caroline house shoe
Supportive house shoe with velcro strap and embroidered motif. Hard wearing flexible sole. Removable insoles. Machine washable. 2V fitting. Burgundy, Blue.
Sizes 3-8
9GA £54

2 mabel slipper
Easy to fit slipper with man-made sole. Grey, Navy.
Sizes 3-8
8A8 £32

3 lambswool slipper
Cosy lambswool cuff and suede sole.
Sizes 4-8
431 BG £49

4 lambswool moccasin
Wool-lined lined slippers. Man-made sole.
Sizes 4-8
2MN BG £45

5 wool-lined moccasin
Wool-lined lined slipper. Man-made sole.
Sizes 4-8
432 BG £45

6 velcro house shoe
Flexible supporting sole with velcro fastening. Machine washable. 2V fitting. Navy, Wine.
Sizes 3-8
6PG £54

7 cassa slipper
Soft metallic slipper with textile lining and leather upper and sole. Pewter.
Sizes 3-8
4F7 PT £75

8 jessie slipper
Easy to fit slipper with man-made sole and decorative toe detail. Black, Grey
Sizes 3-8.
C54 £32

9 butterfly slipper
Versatile slipper with man-made sole. Heather, Navy.
Sizes 3-8
3GD £32

10 marlene slipper
Decorative slipper with lining and leather upper and sole. Beige, Burgundy.
Sizes 3-8
FU3 £32

11 terri slipper
Cosy cuff wedge slipper with pretty check design. Man-made sole. Blue Check.
Sizes 3-8
HN9 £39

12 sylvie slipper
Slip on wedge slipper with memory foam insoles for ultimate comfort. Man-made sole. Burgundy, Grey, Navy.
Sizes 3-8
FU4 £32



maude
Sink into sleep in these comfy cotton jersey styles featuring a beautiful floral print in shades of pale pink, rose, apple and lemon on a white base. Machine washable.
S (10-12) M (12-14) L (16-18)
XL (20-22) XXL (24-26)



maude pyjamas
Short sleeved top with gentle V neck, three button & loop fastening and satin binding. Bottoms with elasticated waist.
JK7 FL £65

maude nightdress
Short sleeved style with gentle V neck, three button & loop fastening and satin binding. Length 42".
JK6 FL £49



ida robe
Perfectly practical waffle-pattern button through gown with waist-tie belt. 100% polyester. Length 45". Machine washable. Pink.
S (10-12) M (12-14) L (16-18)
XL (20-22) XXL (24-26)
JJ9 PK £59



blanche
long sleeve
nightdress

length
45"



blanche
pyjamas



blanche
short sleeve
nightdress

length
42"



marsha
nightdress

limited
sizes

length
45"



new
enid
nightdress

length
45"



new
nadia
nightdress

length
45"

blanche

Drift off to sleep in this beautiful ditsy floral print. Tonal shades of navy and blue on a white base. Soft stretch cotton jersey, comfort is the name of the game! Machine washable.

S (10-12) M (12-14) L (16-18)
XL (20-22) XXL (24-26)

blanche pyjamas

Front button fastening style with long sleeves. Binding on collar and patch pocket. Elasticated waist trousers.

HF9 FL £65

blanche short sleeve nightdress

Classic style with short sleeves, four button fastening to neck and ribbon binding detail. Length 42".

HF7 FL £49

blanche long sleeve nightdress

Classic style with long sleeves, four button fastening to neck and ribbon binding detail. Length 45".

HF8 FL £55

marsha nightdress

Cosy and comfortable long sleeved style with satin trimmed yoke. Pretty trailing floral print in shade of rose, cyclamen, tangerine and sage on a white base. Length 45". Pure cotton jersey. Machine washable.

XS (8) S (10-12) M (14-16)

L (18-20) XL (22-24)

HF5 FL £85

enid nightdress

Delicate floral print nightdress in shades of lemon and kiwi on a white base, the perfect choice for bedtime. Short sleeved style with three buttons, loop fastening and satin binding. Pure cotton. Length 45". Machine washable. Made in the UK.

XS (8) S (10-12) M (14-16)

L (18-20) XL (22-24)

JG8 FL £85

nadia nightdress

Enjoy a peaceful night's sleep in this beautiful cotton nightdress. Pretty floral print in shades of topaz, bluebell, sage, olive, rose and viola. Short sleeved style with a soft 'V' neckline and decorative satin binding. Length 45". Machine washable. Made in the UK.

XS (8) S (10-12) M (14-16)

L (18-20) XL (22-24)

JF4 FL £85



kitty

stylish, cosy
and comfy
classic
nightwear

kitty

Soft warm fleece styles in 100% polyester. Machine washable. Navy.
S (10-12) M (12-14) L (16-18)
XL (20-22) XXL (24-26)

kitty housecoat

Zip front with floral yoke embroidery. Length 46".

9B3 NV £65

kitty bed jacket

Three button style with peter pan collar. One patch pocket. Length 26".

AK5 NV £49

Slenderella
Beautiful Lingerie & Nightwear



kitty
bed
jacket

length
26"



new colour
laurel
housecoat

length
46"

Slenderella
Beautiful Lingerie & Nightwear

laurel housecoat

So soft you won't want to take it off! Pretty and practical button front style with patch pockets. Beautiful floral print on 100% polyester fleece. Housecoat length 46". Machine washable.

S (10-12) M (12-14) L (16-18)
XL (20-22) XXL (24-26)

HG6 PK £65



heather

length
52"

Slenderella
Beautiful Lingerie & Nightwear

dora housecoat

Wrap style, with tie-belt at waist, in a plush, warm, waffle polyester fabric. Turnback cuffs and two side pockets. Length 52". Machine washable. Heather.

S (10-12) M (12-14) L (16-18)
XL (20-22) XXL (24-26)

AK6 HR £85



new
hayley
nightdress

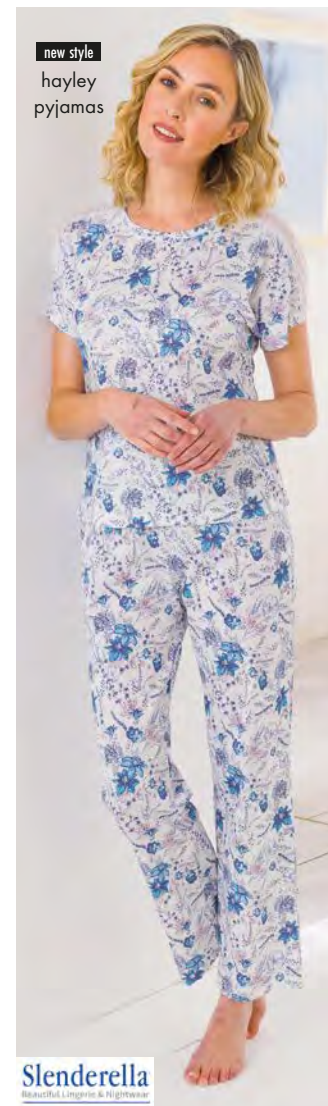
length
40"

Slenderella
Beautiful Lingerie & Nightwear

hayley

Classic short sleeve pull on styles featuring a stunning floral print in tonal shades of blue and blush on a white base with lace shoulders for a light and airy fit. Made from pure cotton for ultimate comfort. Machine washable.

S (10-12) M (12-14) L (16-18)
XL (20-22) XXL (24-26)



new style
hayley
pyjamas

Slenderella
Beautiful Lingerie & Nightwear

hayley pyjamas

Crew neck, short sleeve style with elasticated waist bottoms. No XXL (24-26)

JK3 FL £69

hayley nightdress

Crew neck, short sleeve style. Length 40".

JK2 FL £55



helena

length
45"



new
rosalind
sleeveless
nightdress

length
42"

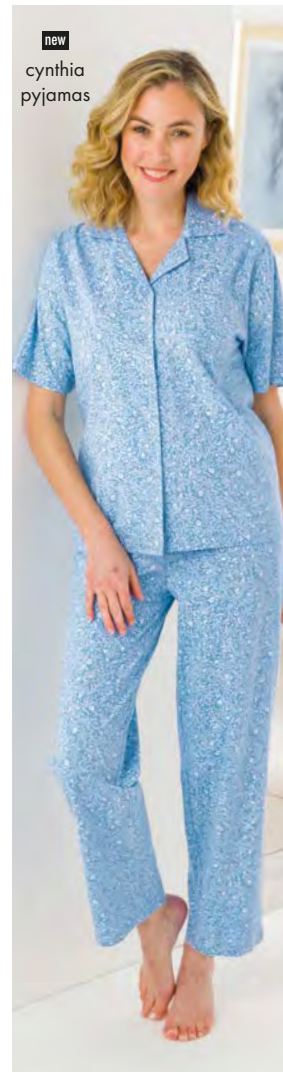
Slenderella
Beautiful Lingerie & Nightwear



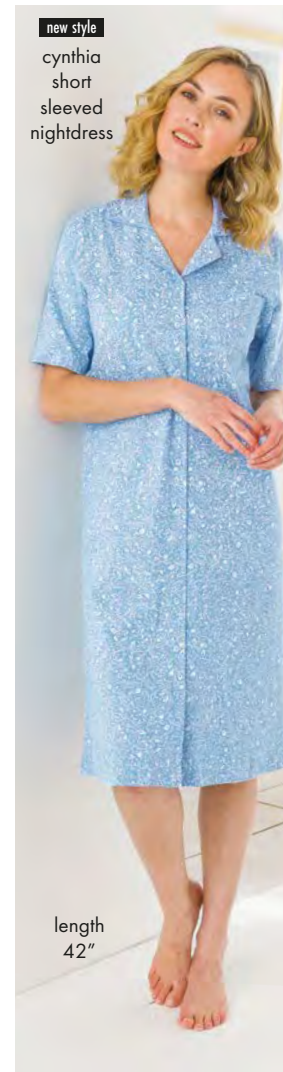
new
rosalind
short sleeve
nightdress

length
42"

Slenderella
Beautiful Lingerie & Nightwear



new
cynthia
pyjamas



new style
cynthia
short
sleeved
nightdress

length
42"



new style
cynthia
long
sleeved
nightdress

length
42"



helena nightdress

Pure Austrian silky cotton jersey in shades of blue floral stripe print. Short sleeved style with soft 'V' neckline and satin binding. Length 45". Machine washable. Made in the UK.

S (10-12) **M** (14-16)
L (18-20) **XL** (22-24)

CD1 BL **£85**

rosalind nightdress

The perfect choice for bedtime. Comfy nightdress with button fastening placket and lace detail to yoke and neckline, featuring a charming floral print in shades of watermelon, cornflower, pale pink, lemon and watercress on a white base. Length 42". Machine washable.

S (10-12) **M** (12-14) **L** (16-18) **XL** (20-22) **XXL** (24-26)

JK5 FL **sleeveless** **£55**
JK4 FL **short sleeve** **£59**

soft, breathable nightwear

cynthia

Drift off and enjoy a peaceful night's sleep in these comfy cotton jersey styles. Quirky ditsy floral print in white on a cornflower base. Machine washable.
XS (37.5") **S** (41.5) **M** (45") **L** (49") **XL** (53")

cynthia nightdress

Classic style button through nightdress with rever collar. Available in long or short sleeves. Length approx. 42".

JN7 BL **short sleeve** **£49**
JN8 BL **long sleeve** **£55**

cynthia pyjamas

Traditional rever collar, button front style. Trousers with elasticated waist.

JN9 BL **£69**

**£26
off**

fern
pippa
short
sleeve
cotton top



**£26
off**

bouquet
pippa
short
sleeve
cotton top



pippa short sleeve cotton top

Attractive pure cotton jacquard, short sleeved sweater with floral design. Finely ribbed neck and welt. Approx. back length 22". Machine washable. Bouquet, Fern.

CH5 FE fern

Sizes 8-18

CH5 BQ bouquet

Sizes 8-20

£55 £29

**£5
off**

carmel
blouse



eucalyptus
polly crop
trousers

polly

Versatile, lightweight and easy care textured fabric 55% polyester/45% cotton. Ideal for travel and leisure. Machine washable.

Sizes 10-24

polly jacket

Unstructured long sleeve jacket with gently shaped lapels. Front patch pockets, centre back seam and tonal buttons. Ideal for travel and leisure. Back length approx. 26½". Peach Melba, Eucalyptus, Stone, Blue.

1K1

£75

polly trousers

Two button side fastening with front pleat. Side waist elastication and side pockets.

2EK inside leg 28"

2EL inside leg 30" £69

polly cropped trousers

Comfortable pull on style with full back waist elastication, soft front pleats with side pockets.

9R4 leg 20" £65

polly skirt

'A' line button through style. Front and back panels with integral front pockets and side waist elastication. Available in all colours.

2EM length 27"

2EN length 30"

2EP length 33" £75 £70

if purchased before

04.04.24

carmel blouse

Checked seersucker in shades of apple, sage, jade and white. 90% cotton/10% polyester. Short sleeved style with a straight hem, side vents and mock turn back sleeve. Back length approx. 28½". Machine washable.

Sizes 8-24

GP5 CK £55 £50

if purchased before

04.04.24



peach
melba
polly
jacket and
trousers



white
silky cotton
square
neck top
see page
27



**£5
off**

blue
polly skirt



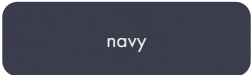
mint



coral



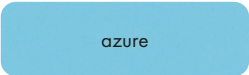
delphinium



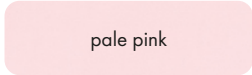
navy



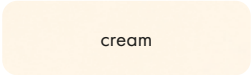
pale blue



azure



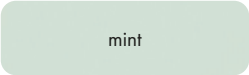
pale pink



cream



cerise



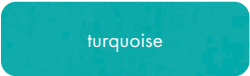
mint



white



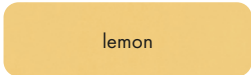
violet



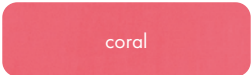
turquoise



apricot



lemon



coral



sapphire

easycore short sleeve blouse

Designed with sweet simplicity. Our easy to wear short sleeved blouse with mock turn back cuffs is the perfect addition to your wardrobe. Made from easycore 65% polyester/35% cotton. Machine washable.

Sizes 8-24

795

£39

easycore long sleeve blouse

In a choice of colours that will co-ordinate perfectly with your wardrobe. Our classic long sleeve blouse with button cuffs, crafted from easycore 65% polyester/35% cotton. Machine washable.

Sizes 8-24

348

£42



papaya
luxury knit
polo
see page
13

new
emilia
skirt

emilia

A timeless classic floral design in pastel shades on a pale blue base. Cut from pure cotton lawn, this will become an all seasons favourite. Machine washable.

Sizes 8-24

emilia skirt

An elegant fully lined skirt that doesn't compromise on comfort. Easy to wear, pretty and lightweight featuring a two button waist fastening and side seam pockets. Feminine, soft unpressed pleats front and back.

JE5 PB length 27"

JE6 PB length 30"

JE7 PB length 33"

£85



new
emilia
blouse

white
easycore
cropped
trousers
see page
19

emilia blouse

Designed in one of our best selling rever collar styles this short sleeve blouse has a straight hem and side vents. Perfect to be worn alone or teamed with the matching skirt as a two piece.

Back length approx. 26½".

JE4 PB

£55



JD5 BQ	angelica	£52
JF9 CA	heidi	£52
JR8 PY	marcie	£52
GN9 PB	jessica	£52

the
CLASSIC
boutique
always in fashion

offer code
(as found on envelope):

phone UK
0330 024 1945

**no time limit
guarantee**

If at any time during its lifetime, an issue arises with the quality of the product please return it for an exchange or immediate refund in full.

sandie
dress



miley
dress



sandie dress

Pop on this easy-to-wear dress and you're ready to go! You'll love the relaxed fit. Cut from pure, soft Austrian cotton jersey in a pretty paisley design. It's practical too, with handy front pockets. Machine washable.

Sizes 10-24

HY8 NV length 43"

£75

miley dress

Flattering button through shirt style dress that will add colour and style to your wardrobe. Featuring long sleeves, self fabric tie belt and side seam pockets. A bright floral design on lightweight pure Tencel which is a natural fibre with excellent drape.

Machine washable.

Sizes 10-24

JC6 NB length 47"

JC7 NB length 50"

£79



shop online by scanning this code using the camera on your mobile phone or tablet



PEFC Certified

This product is from sustainably managed forests and controlled sources

PEFC

PEFC16-33-533

www.pefc.co.uk

If you have finished with this catalogue, please recycle or pass it on to a friend or neighbour

